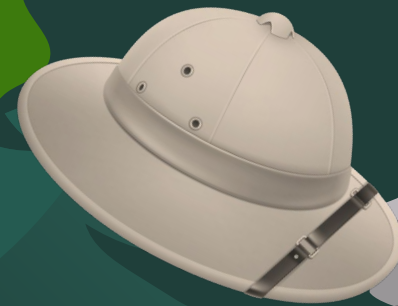


Closed Terrarium Ecosystem

By Christopher Crutchfield



The background is a dark teal color with diagonal light rays emanating from the top left. There are decorative elements: a vine with leaves in the top right corner, and a cluster of various green leaves and a purple rose in the bottom left corner.

What is my project?

What is a closed terrarium?

Terrarium: A usually transparent enclosure for keeping or raising plants or usually small animals indoors.

- 🦆 Closed terrariums are sealed over long periods of time
- 🦆 The species within support each other in a self-sustaining system
- 🦆 Closed terrariums can have their own water cycles



How do they work?

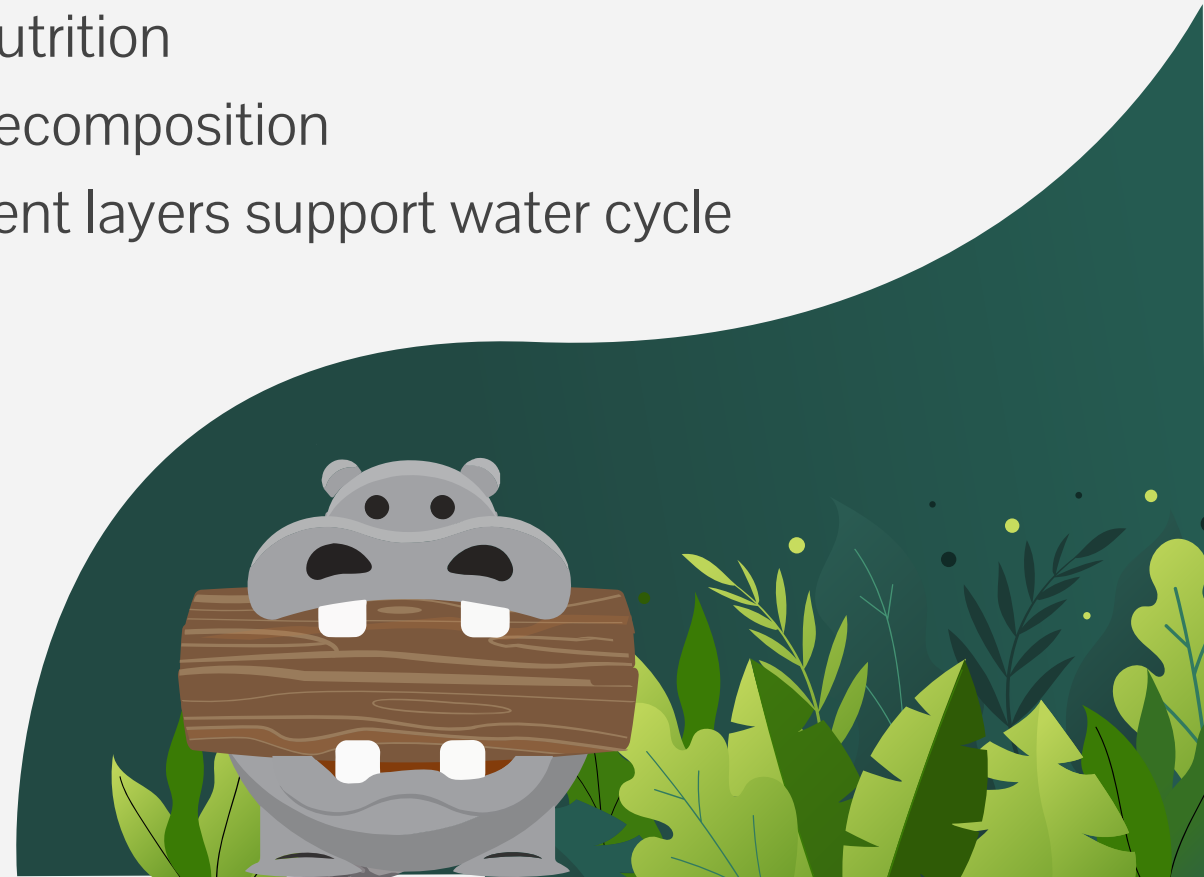


All species support one another

- Nutrition
- Decomposition



Different layers support water cycle





David Latimer's Terrarium



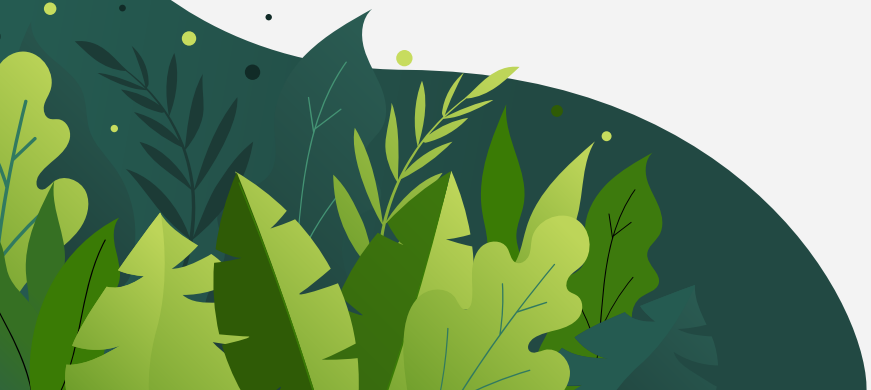
The oldest known closed terrarium

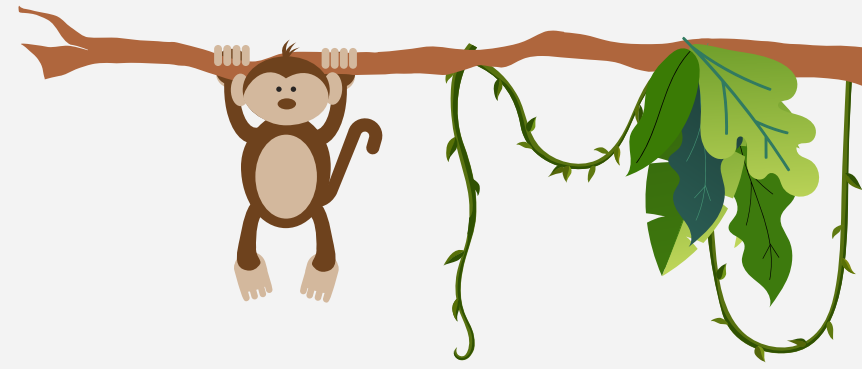


Started in 1960, last opened in 1972



Started from a single seed





My Plan





What I wanted in my terrarium

Plants

- 🦆 Local ferns
- 🦆 Local moss
- 🦆 Local sorrel

All of the plants included come from the local MN environment.




Animals

- 🦆 Just Springtails

Springtails are crucial decomposers for the health of a terrarium.





How I sourced my species



My backyard



Final Product

After introducing the springtails, and providing some water, the terrarium was ready to be sealed.

Besides light it now has everything it needs!

