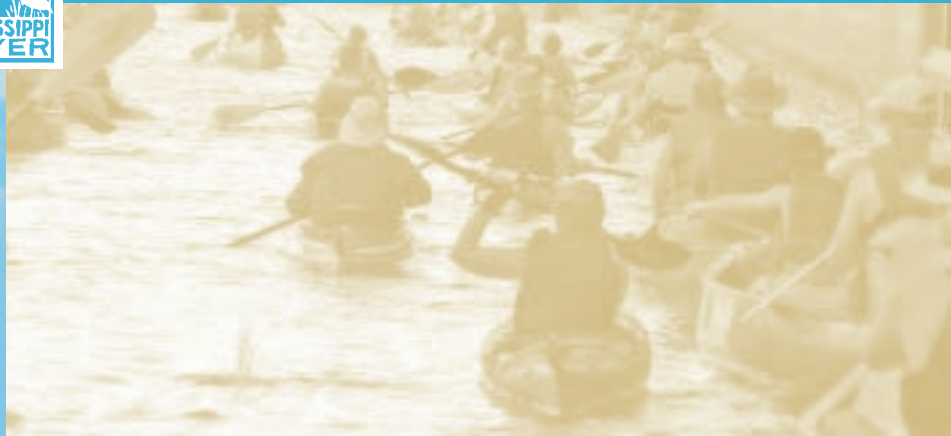




Healthy River, Healthy Communities.



Friends of the Mississippi River | 2005 Annual Report



Letter from the Board Chair

Dear Friends,

What is your vision for the future of the Metropolitan Region? Does your vision include clean water – water for drinking, swimming and fishing? Does your vision include the floodplains, scenic bluffs and the natural and cultural treasures of the Mississippi River? If you live in the reaches of the Mississippi River, you know that the river and the adjacent lands are not what they once were – our vision for the future must include the Mississippi River.

As Chief Seattle said, “The rivers are our brothers. They quench our thirst. They carry our canoes and feed our children. You must give to the rivers the kindness you would give to any brother.”

The Mississippi River is one of the great rivers of the world – an ecological system of international significance. In the Minneapolis/St. Paul metropolitan area, the Mississippi River is a significant community asset, providing habitat and open space, drinking water to millions, incomparable scenic views, a variety of recreational opportunities and multiple cultural and historic sites.

Friends of the Mississippi River’s success depends on our ability to focus our limited resources on key areas where we can have the most impact protecting, improving and restoring important natural areas, water quality and the ecological, cultural, historical, scenic and recreational assets of the Mississippi River corridor.

In 2005, to protect and restore these qualities, the FMR board and staff developed its 2005 to 2009 Strategic Plan to guide its work, using strategic goals and benchmarks. FMR uses a “rolling” model of strategic planning in which we set five-year goals and shorter-term, two-year benchmarks against which we can measure our progress. Every two years we evaluate progress toward our plan and then revise and recalibrate the goals and benchmarks.

How we accomplish our goals is largely dependent on FMR members, staff and volunteers – people who are willing to convert their love of the river into on-the-ground results. In 2005, over 170 people were involved in buckthorn removal in the Pine Bend Bluffs area, 2,000 adults and youth completed storm-drain stenciling and fifteen teams, including forty new volunteers, monitored wetland health. In addition, we organized citizen advocates for the river to participate in public meetings, write letters to their elected officials and organize their neighbors.

Will it make a difference? We believe it will – and is! Each of these individual actions, whether it be volunteering to restore a streambank, making a financial contribution or writing an elected official, adds up. The cumulative effect will improve water quality, restore habitat and protect the floodplains, scenic bluffs and the natural and cultural treasures of the Mississippi River. The education and awareness we support will create a large, well-informed constituency of citizens who care about the river and its watershed, and who are willing to take action to protect it.

On behalf of FMR’s board and staff, I thank you for your kindness to the Mississippi River through your support of our work with your ideas, volunteer work, financial contributions and program participation. We look forward to your continued involvement with us as we work to implement FMR’s vision to protect and restore the river. We all envision a river that is cleaner, healthier, more alive and more inviting, a river no one can ignore or take for granted.

Warm regards,



Lynn Moratzka
Chair, Board of Directors



Lynn Moratzka
Chair, FMR Board of Directors

Program Overview:



FMR works to keep the river healthy, so generations to come can enjoy its many gifts.
Photo courtesy of Cold Snap Photography.

“We forget that the water cycle and the life cycle are one,” said Jacques Cousteau. Our quality of life is dependent on the river and its watershed, and its vitality directly impacts the health of our communities. We who live in the Twin Cities are fortunate to have the Mississippi River flowing right through our backyards, enriching communities throughout the metropolitan area. We enjoy its beautiful vistas, its wildlife, its parks and natural areas, its link to our past – and we depend on it to supply healthy drinking water and a clean place to fish, boat and swim.

Unfortunately, the Mississippi’s water is not as clean as it should be, and its degraded ecosystems no longer function as they once did to protect its ecological health. Because the river belongs to us all, we are responsible to take care of it, to ensure that its waters, and our communities, are clean and healthy. This year, FMR worked with an amazing number of volunteers, and partnered with a variety of agencies and organizations, to restore natural areas, to educate citizens and local officials about the value of river stewardship and to train these stewards to actively care for the river.

WATERSHED PROTECTION

The Mississippi River and its tributaries supply our drinking water and beautiful places to recreate. However, these waters are fast becoming too contaminated for human use. Development is dramatically impacting the health of communities all along their banks and in their watersheds. For these reasons, we focus our water quality efforts on influencing local land use decisions that profoundly affect our water resources. We work to raise awareness of the issues by engaging citizens in the work of influencing local government and in hands-on restoration projects. We strive to get both public officials and private citizens to think critically about their impact on the watershed.

LAND PROTECTION AND RESTORATION

How we tend the land along the river and in its watershed profoundly affects the health of the river. The land provides habitat for the birds we watch, scenic views, restorative places to walk, parks to bike and hike. Without quality habitat, we stand to lose these very amenities that enrich our lives and keep us healthy. The few remaining natural areas left in the metro area are threatened by development that is dramatically altering the landscape and damaging the function of their ecosystems. FMR works to protect these remaining high quality natural areas and restore land along the greenways that connect them. We help landowners act as thoughtful stewards of these parcels of land, and ultimately of the interconnected areas that we share.

RIVER CORRIDOR STEWARDSHIP

Rooted in history and yet so much a part of our everyday lives, the Mississippi River grounds us in our communities and our world. Many aspects of the river transcend time – the beautiful vistas, the wildlife, flowing water that has carved out the river valley and surrounding bluffs. We enjoy eagles flying overhead, heron and fox on the banks, wildflowers in the woods. We boat on the water, hike on the trails and enjoy the tranquility of nature – all in the center of an urban area. Developers are drawn to the river for precisely these reasons, and yet their plans sometimes threaten to obscure views, degrade shorelines and destroy habitat. FMR works with citizens and local government to enforce laws that protect the river, and to empower communities to shape the character of the river where they live.

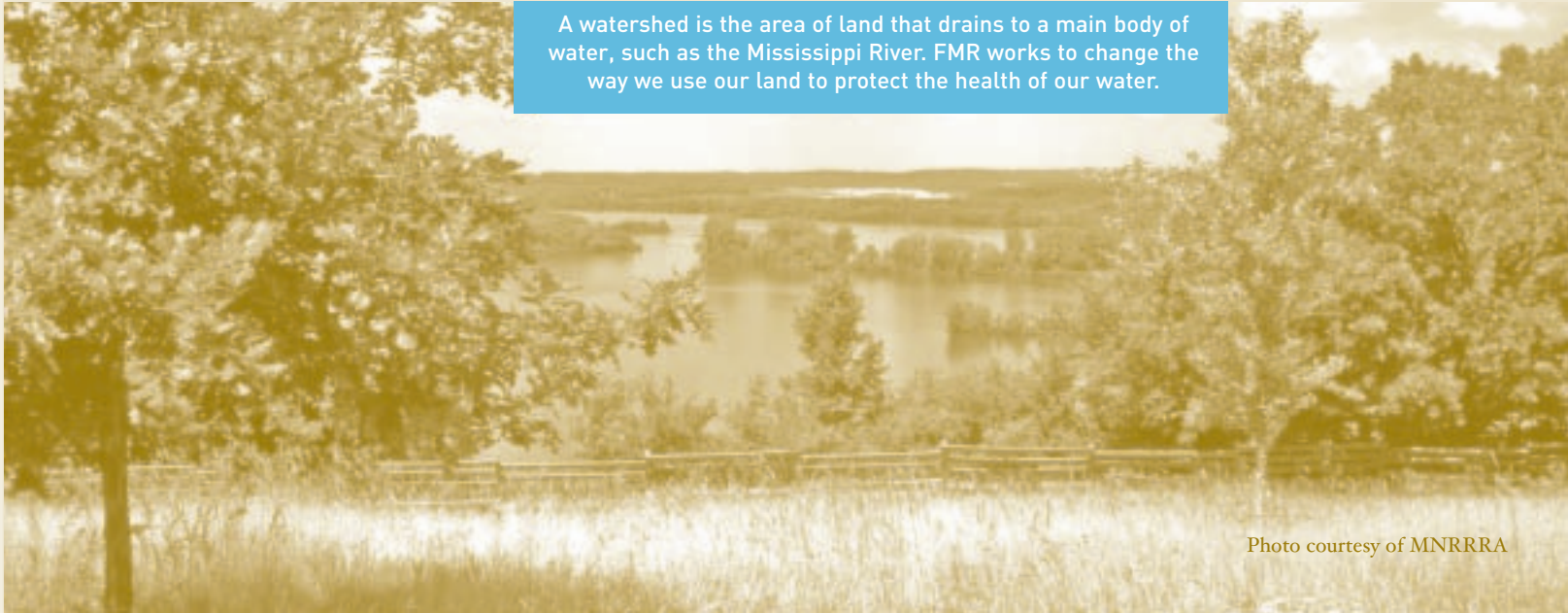
Watershed protection

With the passage of the Clean Water Act more than thirty years ago, the quality of water in our rivers, lakes and streams improved dramatically. Unfortunately, progress has leveled off, and the health of our rivers and lakes has begun a steady decline, especially in rapidly urbanizing areas, where natural landscapes are giving way to streets, parking lots and buildings.

An important tributary of the Mississippi, the Vermillion River in Dakota County is known as a world-class trout stream. That status is now threatened, as a changing landscape degrades the health of our waters. Groundwater, from underground aquifers, feeds streams and rivers, and surface waters sometimes percolate through the ground to recharge aquifers. An insult to one may be an insult to both. Many of our surface waters, such as those flowing in the Mississippi and Vermillion Rivers, are contaminated with bacteria from human and animal waste. Groundwater can be contaminated by other sources; nitrates,

pesticides and pharmaceuticals are a few of the contaminants that leach down into the groundwater. Your drinking water supply can come from either source, surface water from the Mississippi River for most urban residents and groundwater for those living in most of the suburbs.

To protect our water, we encourage citizens to take responsibility for the health of their watersheds. Our hands-on stewardship and educational programs focus on two tributary watersheds in the fast-growing fringes of the metro area: the Vermillion River and Rice Creek, which includes portions of Anoka, Washington and Ramsey counties. As citizens become more involved as stewards of their local streams and wetlands, they also become motivated to advocate on their behalf. FMR is building a base of citizens who are getting involved by pushing their local elected officials for policies that are more protective of our precious water assets.



A watershed is the area of land that drains to a main body of water, such as the Mississippi River. FMR works to change the way we use our land to protect the health of our water.

The health of wildlife, such as trout in the Vermillion River, is an indicator of the health of our watersheds.



INFLUENCING PUBLIC POLICY

Protective Watershed Management in the Vermillion River Watershed

FMR has focused on three strategies to protect the quality of the Vermillion: ensure properly functioning septic systems, require adequate shoreline buffers and pass effective stormwater standards. Our continued work within the Vermillion watershed paid off this year with the approval of the Vermillion River Watershed Plan, which reflects these priorities. We pushed for a septic system inspection/abatement program, developed by Dakota County and the Vermillion River Watershed Joint Powers Organization (JPO), and were gratified when the JPO adopted a plan consistent with the one FMR and residents have been advocating.

Rice Creek

In 2005, FMR developed a partnership with Minnesota Waters (formerly Minnesota Lakes Association and Rivers Council of Minnesota). We organized lake associations to promote proactive stormwater standards that will ensure that we have the fishable, swimmable lakes we expect in Minnesota. Along with the Minnesota Department of Natural Resources and other environmental groups, we educated citizens about the negative effect excessive stormwater can have on downstream water quality. In 2006, FMR will work with Minnesota Waters and concerned citizens to develop protective standards for new development in rapidly urbanizing areas.

Low Impact Development (LID)

FMR partnered with the City of Lakeville on an exciting new initiative to show how innovative design can protect resources and still allow for the economic benefits of development. We put together an alternative plan for a development already in the works to compare the two approaches. Our resulting plan featured dramatically reduced stormwater runoff, lower installation and maintenance cost and increased wildlife habitat value, proving to be more profitable for the developer and offering an increased tax base for the city. The project was a finalist for a Minnesota Environmental Initiative Award in the Land Use category.

Elko/New Market Wastewater Treatment Plant

This year, FMR and several partners effectively worked to limit an expansion of this treatment plant that would have allowed a seven-fold increase of wastewater entering the Vermillion River. This expansion would have damaged the river with increased water temperatures, bacteria, pharmaceuticals and other pollutants. We also successfully pressed for a new sewer pipe that will funnel much of the wastewater to a treatment plant in Empire township, which can better handle the increased volume.

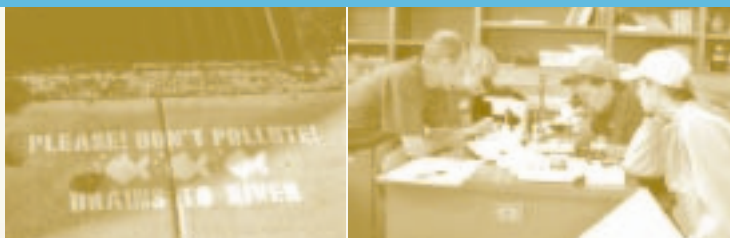
PROMOTING STEWARDSHIP

FMR's stewardship efforts combine grassroots advocacy, land conservation and public education. In 2005, we continued and expanded our work on several successful programs.

Photo courtesy of MNRRA



FMR engages volunteers in water quality monitoring with a goal of educating citizens and creating stewards of the river.



Rain gardens, such as this one in Burnsville, reduce excessive runoff of stormwater into rivers, lakes and streams.



Photo courtesy of Barr Engineering

Wetland Health Evaluation Program (WHEP)

This highly successful program engages citizen volunteers to help monitor wetlands in their community and to raise awareness of the many important ecological functions of these wetlands. This year, fifteen teams, including forty new volunteers, were trained in field methods and the identification of macroinvertebrates and vegetation. After field and lab work was completed, volunteers presented their findings to their local elected officials, an important component of the program. The experience taught more than technical skills; it also offered participants a chance to see how they could make a difference in their communities by taking the next step— influencing local policy to protect our precious resources.

Vermillion Stewards

Modeled on the popular Gorge Stewards Project (see River Corridor Stewardship section), the Vermillion Stewards Project was successfully launched this year to get citizens involved in protecting and improving the watershed where they live. Featuring hands-on activities and education, community members took part in a prairie hike, rain garden workshops, seed collection, invasive species removal and a watershed cleanup. A total of 230 citizens at nine events contributed 400 hours of their time, making it a remarkable inaugural season for a program that we expect will continue to grow. In the coming year, we hope to increase the number of partners involved in the project and diversify our funding sources.

WATER QUALITY EDUCATION

Educating the public is key to shifting behavior in a way that will enhance, rather than degrade, the health of our water. In 2005, FMR carried out its education efforts on a number of fronts.

Stenciling and classroom-based education

Using paint and stencils, 2,000 student and adult volunteers stenciled more than 5,000 drains with the message, "Please Don't Pollute! Drains to Mississippi River!" and distributed over 12,000 educational doorhangers. Through demonstrations, experiments and discussion, FMR enhanced the educational impact of the project with engaging classroom presentations to over 2,000 students.

Watershed and rain garden workshops

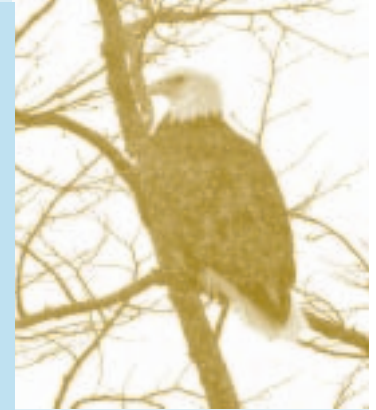
Interest in rain gardens and other stormwater management practices has taken off in the last couple years as people explore new ways to limit their personal impact on water quality. In 2005, FMR staff presented 13 water quality workshops to nearly 300 community members, teaching people how they can reduce their impact on local waters by taking measures such as installing rain gardens and rain barrels, and reducing pavement to reduce runoff.

Land protection and restoration

The Twin Cities was once covered in prairie, savanna, forest and wetland, a haven for migrating birds and other wildlife. Unfortunately, most of the original natural areas are gone – only 4% of those natural communities remain; the rest have now been permanently altered, in many cases wiped out and replaced with agriculture or development that is rarely sensitive to the landscape’s natural functions. We have lost natural water filtration, quality habitat, well-functioning ecosystems – and thus clean water, wildlife and beauty.

We must protect what remains, and restore what we can. This year, FMR continued to partner with agencies, organizations and landowners large and small to protect and connect the most critical natural and scenic lands while still allowing agriculture, industry and neighborhoods to grow and thrive. The result is a healthier ecosystem, a richer culture and a greater quality of life. Hundreds of volunteers have worked with us to restore these connected green corridors that affect not only the health of our communities, but those downriver.

See the map on the following pages for details of our work to restore and protect land along the Mississippi River.



Volunteers haul away woody debris that has been removed from an area of land being restored.

OUR WORK WITH LANDOWNERS

Landowner outreach

A big part of our work with landowners is developing relationships and helping them understand the value of their land. Much of our work involves assisting landowners as they work through the often complex process of determining what options are available to them to protect and restore their property. In 2005, we assisted nine landowners in Dakota County with applications to land protection programs.

Our ongoing work with private landowners who own property in the Mississippi River corridor is rewarded when we begin to see ecological improvements on their land or when an important natural feature is permanently protected from development.

Mississippi Vermillion Heritage Land Registry

FMR developed this registry program as an honor roll of landowners who volunteer to protect their land for the benefit of the resident ecosystems and wildlife. Four additional landowners joined this year, bringing the total to 52 landowners caring for nearly 3,000 acres of land.

PINE BEND BLUFFS NATURAL AREA

One of the largest patches of high-quality natural areas left in the Twin Cities, Pine Bend Bluffs natural area provides a snapshot of the rich original landscape of the area and a vision of how it might once again look and function. Over the years, FMR has developed relationships with a number of corporate and private landowners in the area, working toward this vision.

Flint Hills Resources (FHR)

This large corporation has come to see the value of investing in the land they own along the river. Over the seven years we have worked with them, their property has improved dramatically. Where thickets of invasive buckthorn once crowded out native vegetation, proud oaks now stand with their branches reaching wide in the liberated space. This year we began work to restore additional bluffland areas of the property and developed plans for a 40-acre forested section.

Pine Bend Bluffs Scientific and Natural Area (SNA)

One of the most scenic sites along the lower Mississippi River in the metro area, this SNA covers 216 acres in Inver Grove Heights and boasts oak forests on most of the site, from the banks of the river to the tops of the 200-foot bluffs. Over the years we have managed restoration projects on oak savanna and dry prairie areas of the SNA. In 2005, an impressive 174 volunteers helped us remove and burn exotic plants and shrubs and collect seeds to restore the ecological health of this area. FMR cleared exotic shrubs from about 20 acres of the site, opening up views to a previously inaccessible pond.

LOWER MISSISSIPPI RIVER CORRIDOR

Heritage Park

The city of Inver Grove Heights plans to transform this contaminated site on the banks of the river, formerly a railroad yard, into a 50-acre park featuring recreational paths, a

performance space, restored natural areas and interpretive components. In 2005, FMR and Emmons and Olivier Resources co-wrote a natural resource management plan for the park.

Spring Lake Park Reserve

A high-quality forested area on the bluffs of the river in eastern Rosemount and Nininger Township this park reserve includes more than five miles of Mississippi River shoreline. FMR has been working with Dakota County to restore a high-quality forested area on this property. This year, we removed invasive exotic trees and shrubs on 80 acres of the site to help restore the natural plant communities.



3M

The company owns 3,000 acres, including critical natural areas, along the Mississippi River in Cottage Grove. FMR is working with 3M to restore and manage natural areas on their property.

This year, we began restoration work, along with a group of dedicated employee volunteers who are stewarding this beautiful land. At two events, they removed exotic plants and collected native plant seeds for future planting.

These individuals have shared their passion with others in the organization to gather support for the restoration work.

Hastings River Flats

Located on the Mississippi River in Hastings, this 216-acre site was formerly a petroleum tank terminal. Now managed as a city park, the site is not only an important local resource, but is part of the larger, internationally significant Mississippi River ecosystem. Two years after installing a 30-acre prairie and 1,100-foot lakeshore buffer planting, FMR continues to monitor this site and assist the Hastings Parks Department with maintenance.

Rosemount Wildlife Reserve

Working closely with FMR staff, a private landowner donated a 15-acre portion of her property to the City of Rosemount to develop this wildlife reserve, which is part of a continuous corridor of natural habitat significant to migratory birds. With funding from the Upper Mississippi River Forestry Partnership, FMR participated in the “Closing the Canopy” project, intended to reverse the declining numbers of migratory birds by restoring their habitat. Through this and other programs, we began work to restore portions of private properties to their native and historical character.

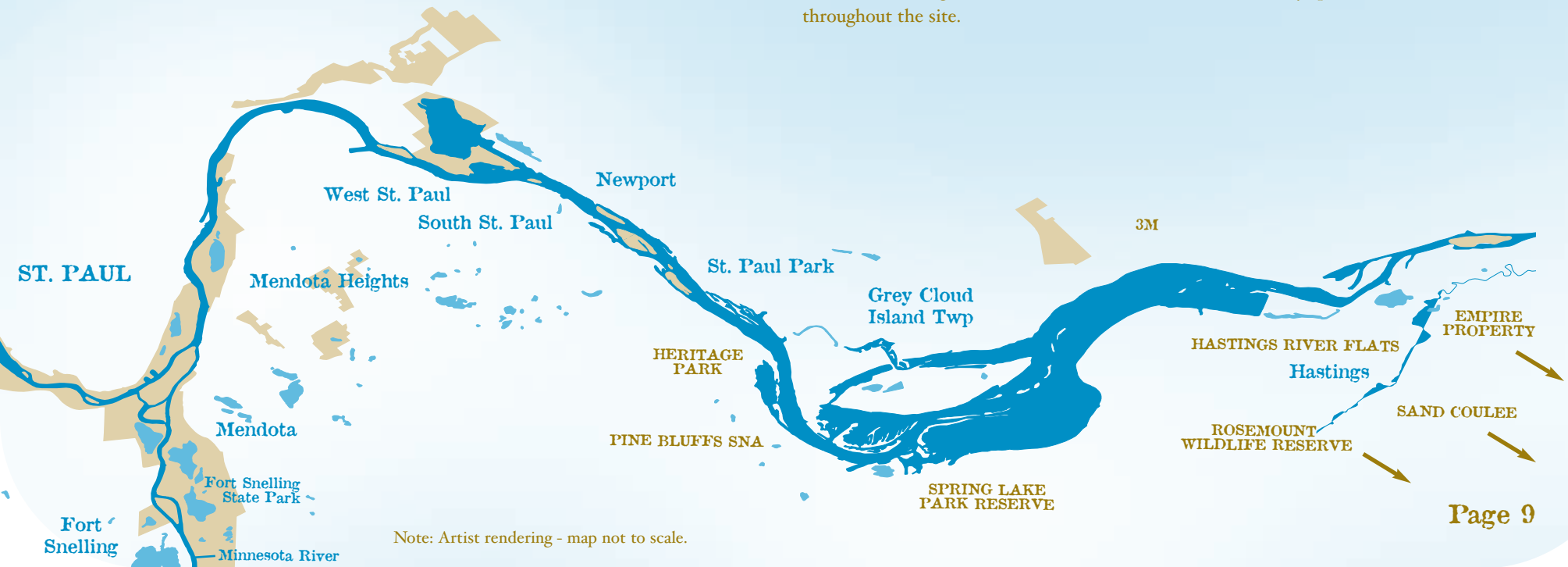
VERMILLION RIVER CORRIDOR

Sand Coulee

Covering over 500 acres, the sand coulee is a mix of woodland and grassland habitats, including the largest prairie remnant in Dakota County. This year, FMR was awarded a Private Stewardship grant from the U.S. Fish and Wildlife Service to continue its restoration work in this area. These grants are awarded to only the highest quality areas, indicating its value as open space worthy of protection. We continued intensive restoration work on private properties, removing exotic invasive shrubs and trees and collecting and distributing native seed. We also developed a management plan for a new area in the coulee and worked with the City of Hastings to restore the city-owned portion of the coulee.

Empire Property

Owned by the Metropolitan Council, this 400-acre property lies along the Vermillion River in Empire Township near Farmington. We continued work on a two-year, 50-acre wet meadow restoration, which was a finalist for a 2005 Minnesota Environmental Initiative award. We also began site preparation to enhance a native grassland and worked to remove exotic woody species from throughout the site.



Native plants, such as coneflowers, reduce stormwater runoff and attract wildlife.



River corridor stewardship



A volunteer removes invasive garlic mustard and buckthorn seedlings in the gorge area of the river.

Communities along the Mississippi River have access to an international gem that offers unique recreational opportunities, breathtaking views and a strong sense of place rooted in natural and cultural history. Our freedom to interact with the river makes it a public asset to be enjoyed and tended. We marvel at the views, some that have hardly changed in decades, connecting us to the history of the land. We soak in the river's beauty and let it heal us, much like the earth soaks up sun and rain for renewal.

A changing landscape means that views are faced with extinction and the health of the river is diminishing. Developers are drawn to the river's assets but, paradoxically, sometimes degrade them by building in ways that block views of the bluffs, contaminate the water and cut off public access.

FMR continues to encourage active stewardship of the river through a number of innovative and successful initiatives. In 2005, we involved an increasing number of citizens in hands-on stewardship, educated students and adults about ways they can reduce the pollution that goes into the river and mobilized citizens to speak out to influence local decisions related to the health of the river and their own communities.



PROGRAMS AND EVENTS

Gorge Stewards

The Gorge Stewards began as a small group of volunteers in the Longfellow neighborhood of Minneapolis, and has grown into an extensive network of river stewards lining the gorge on both sides of the river in both Minneapolis and St. Paul. This year the reach of the Gorge Stewards expanded to include the Marcy Holmes and West Bank neighborhoods in Minneapolis.

Gorge Stewards join in both interpretive events, such as historical tours, birding hikes and plant identification forays, and volunteer projects, including cleanups, invasive species removals and native plantings. After years of work by committed stewards, the gorge area is really taking shape. Last summer, volunteers were delighted to find clusters of native bloodroot blooming where exotic buckthorn had once crowded them out. At 40 events this year (up 18% from 2004), 427 people participated in interpretive events, and 764 in stewardship events, contributing 2,179 total hours (up 121% from last year!) to care for the river.

Special Places Tours

Designed to be fun, active and educational, these popular tours fill quickly. They encourage appreciation for the amazing diversity of the river and they promote a sense of ownership for its welfare. This year we added three new events to our lineup: Exploring the Meeker Island Lock & Dam Ruins, Snowshoeing and Owl Watching at Spring Lake Park and Birding at Hastings River Flats. Tours were attended by 355 people (up 25%) and led by 15 volunteers, who shared their expertise about natural areas linked to the river.

Mississippi River Challenge

In 2005, we welcomed the Minnesota Chiropractic Association - American Spine Foundation as the new title sponsor of our second annual two-day, 44-mile event. This year, 250 paddlers raised \$53,000 in pledges to support FMR's work and enjoyed two beautiful days on the river supported by over 100 amazing volunteers. (See sidebar for highlights of this year's event.)

Paddlers launched early in the morning to the sounds of a Native American drum ceremony at beautiful West Coon Rapids Dam Regional Park. Gorgeous weather escorted paddlers 22 miles downstream to Historic Fort Snelling as they passed through three locks, stopped at several scenic riverfront parks and enjoyed lunch by Panera Bread Company. The journey led them through island-studded urban wilderness, industrial riverfront, an historic district and the scenic and tranquil gorge where high limestone bluffs tower above the river.



After walking up from the beach, paddlers were greeted at the walls of the fort by living history actors in the costumes of voyageurs, settlers and frontier soldiers. They settled in for an evening of revelry, relaxation and rejuvenation, featuring live music by the Chris Silver Band and a hearty meal provided by French Meadow Bakery and Thousand Hills Cattle Company, with dessert by Blue Sky Creamery!

After camping overnight inside the fort, participants awoke to the sound of a cannon, were served hot coffee and breakfast and then reclaimed their crafts for the final leg of the Challenge. They navigated 22 more miles on the second day – paddling through classic floodplain forests, downtown St. Paul and the Pig's Eye Lake area before pulling in at scenic Grey Cloud Island in St. Paul Park.

The rigorous but fun nature of the 2005 Minnesota Chiropractic Association-American Spine Foundation Mississippi River Challenge made it an attractive event for paddling enthusiasts of all skill levels. Many participants raised substantially more than the minimum \$200 pledge amount, appreciating the integral link between work to protect the Mississippi River and the opportunity to experience the river and the Twin Cities from a new point of view.

www.MississippiRiverChallenge.org





FMR worked with the Metropolitan Design Center on plans for development along the river that allow for natural buffers and public greenspace.

ADVOCACY

River's Edge

For nearly three years, FMR has been working with communities in south Washington County to encourage river-sensitive development. Central to this work has been a large proposed development that would feature nearly 2,000 housing units and 40,000 square feet of commercial buildings on approximately 400 acres around a pristine backwater bay. In order to provide a vision that the community might embrace, FMR worked with local elected officials and the Metropolitan Design Center at the

University of Minnesota to create a series of design alternatives that accommodate high-density design while protecting a significant amount of open space along the river and bay. Designs were presented to citizens at a public forum and were received enthusiastically. As FMR moves forward, we will work to help communities find funding to protect public land.

Saint Paul Corridor

In order to protect the river as an ecological, scenic and recreational asset of statewide significance, the Mississippi River in the Twin Cities has been designated a State Critical Area. Under this designation local governments along the river are required to adopt land-use regulations that limit building heights and setbacks and set other standards to safeguard the river corridor. Though commonly accepted, most of these laws are not effectively enforced. This year, FMR amended its strategic plan to focus on enforcing these laws, and we convened natural resource professionals to develop a coordinated strategy. We worked with citizens—the most effective voice in helping enforce the laws—to prevent the granting of height variances along the river corridor in St. Paul. In the case of one prominent proposed development in Saint Paul, FMR's board of directors, along with 19 other organizations, passed a resolution opposing a massive

development that would violate critical area laws by erecting 30-story buildings on the West Side Flats, forever altering the historic landscape of the river valley in Saint Paul.

Rosemount Trail

For several years, FMR has been working with the City of Rosemount and the design firm Hoisington Koeigler Group to plan an interpretive trail that will connect downtown Rosemount to Spring Lake Park on the Mississippi River. The proposed trail traverses a variety of landscapes: residential neighborhoods, developing areas, forests, wetlands, restoration sites, and agricultural and industrial areas. With the proposed corridor mapped out, including trail alignment, interpretive elements and opportunities for natural area restoration, the public was invited to comment on the plan at an open house in the fall. Received enthusiastically, the proposal was approved by the city, allowing work on the trail to begin soon.

Above the Falls

This year, FMR worked with citizens and environmental groups to support implementation of a master plan calling for continuous greenspace and trails on both side of the river north of downtown Minneapolis, and which would provide the missing link for the nationally renowned Grand Rounds regional trail system. We worked with landscape architects and city park staff on plans that feature restored and naturalized shorelines, rain gardens, reduced roadway widths and more parks and trails.

We have also taken the lead on redevelopment of the Upper Harbor Terminal, a 48-acre, city-owned site on the river in north Minneapolis. FMR and the city both envision a mix of parkland and housing, with greenspace to buffer the river. The city has dedicated a half-time staff person to focus on the project, providing it the momentum it needs to move forward.



Crystal Cove is part of the natural area threatened by the proposed River's Edge Development.

Volunteers

The following are among more than 3,641 volunteers who contributed more than 13,000 hours of their time in 2005 to make our work possible.
We are extremely grateful for their commitment to the health of the river!

Laura & Dan Addabbo • Karen Alexander • Tom Alsides • Jason Anderson • Doug Anderson • Wendi Anderson • Anthony Andrea • John Anfinson • Brian Ashman • Dan Baer • Arah Bahn • Tom Balcom • Mary Clare Balders • Dan Bale • David Bart • Jerry Battcher • Marc Battistini • Melissa Bean • Joe Beattie • Paul Becker • Leigh Behrens • Julie Beitler • Elizabeth & Tom Bell • Alice Bell • Kris Benjamin • Anne Benson & Will Dixon • Barbara Beresford • Brian & Barb Berggren • Ann Bernstein • Margaret Berrisford • Dave & Sue Betzler • Kevin Biegler • Bob Bierscheid • Linda Bishop-Kowitz • Adam Bjerke • Sandee Blanchard • Bill Blood • Jamie Boardman • Peggy Booth • Don Booth • Jeff & Karen Boser • Frank Bowden • Doreen Bower • Erin Bowley & Jeremy Szopinski • Becky Boyer • Audrey Boyle • Mark Brandt • Leroy Bratland • Carolyn Braun • Yvonne Brazelton-Singleton • Deirdre Brennan & Vince Skemp • Aaron Brewer • Holly Breymaier • Kris Brodersen • Santi Bromley • Rob Brown • Brownlow Family • Amy, Emily & Kristen Bruner • Robert Buck • Jean Buckley • Terri & Rhett Buttleman • Carl Cabak • Gary Cagle • Sally Cagle • Rich Cairn • Candace Campbell • Bill Capman • Ardell Capuzzi • Jill Carey • Glenn Carlson • Virginia Carlson • Carolyn Carr & Jonathan Sellman • Tara Carson • Layne Carver • Gerald Casey • Kim Casey • Melissa Cathcart • Harlan Cavert • Peg & Mark Challgren • James & Mary Chastek • Joyce Clarin • Tom Clarke • Katie Clayton • Kristen Cleary • Joyce Cleary • Naomi Cohn • Ken Collier • Marsha Collins • Patti Combs • Barbara Comstock • Beverly Conerton • Judy Connors • CeCe Cope • Rebecca & Scott Cramer • Stewart Crosby • Clyde Cutting • Andrea Cutting • Jill Danner • Elise Danze • Mark Davis • Rick & Chris Davis • Margaret Mary Dean • Barbara DeFoe • Keith Dehnert • Marilyn Deleon • Theresa Di Marco • Natalie Diebel • Michael Dings & Kathryn Rolstun • Nate Dion • Shawn & Kirsten Dirkes • Richard & Joan Dornfeld • Sheila Dougard • Dorothy Anne Drake • Amy Drier • Kevin Driggers • Melissa Dufour • Hannah Dunevitz Texler • George Dunn • Terry Dunst • Jeremy Dusharm • Angelique Edgerton • Taylor Eide • Delos & Karen Eilers • Penny Eldridge • Robyn Eller • Clem Engen • Judith & Attila Erdos • Joe & Sue Eschenbacher • Guillermo Etienne • Brett Evans • Jean Fagerstrom • Michael Farnan • Kristina Felbeck & Dave Heitke • Dave Fetter • Christopher & Michele Flannery • Michelle Fleming • Fiona Fletcher • Forrest Flint • Rebecca Flood • David Foag • Claire & Garry Foltz • Dr. Una Forde • Ann Fosco • Katie & Rick Fournier • Donna & Hank Fournier • Chris & Gail Frethem • Catherine & Clint Fritter • Ellen Fuge • Joan Furlong & Randy Strobel • Katie Galloway • Pat & Barb Garin • Toby Garrett • Rachel Geissinger • Jenny Geske • Helen Goeden • Jill Goodrich & Terry Dunst • Tom Goodwin • John & Mary Gould • Peter Gove • Rich Gramling • Gerald Grant • Julie Graves • Kathy Gray • Tian Green • Rollie Greeno • Carol & Rick Greenwood • Jim Griser • John Groos • Jon & Betty Gross • Gwen Gros-Sephan • Phil, Brenda & Molly Grove • Frances Guminga • Ernie Gunderson • Raquel Guzman • Wendy Haan • Kathleen Haan • Kim Haffarth • Chris Hagan • Bill Hageman • Michelle Hald • Mike & Patrick Haley • Nathalie Hallyn • Ruth Halvorson • Vivianne Hanke • Katherine Hannemann • John Hannigan • Dave Hanson • Eric Hart • Eric Hauge & Flo Dubaille • Virgil Haugen • Ron Hauser • Amy Have • Brooke Haworth • Beth Hayden • Mark Hayle • Elena Haynes • Ed Heinen • Maggie Heisterkamp • John Helgeland • Nat Hemstad • Sean Hendrix • Eric Herrera • Phil Heywood & Paula Vollmar • Harland & Justin Hiemstra • Chris Higgins • Mary Hilfiker • Marjean Hoef • Steve Hoffman • Ollie & Dorothy Hoffman • Nadine Holder • Tamara Holmes • Vicki Holmstrom • Krista Homme • Mike Hornberg • Lisa Houdek • Ginny Housum • Jim Hovey • Gary Hovey • Patsy & Bob Huberty • Brian Huberty • Nathan Huerkamp • Rich Hunt • Jerry Hunter • Alicia Hunziker • James Hurst • Bob Hurst • Mary Hurtley • Katie Huttemier • Monica Hynds • Tom Ibsen • Marjorie Ireland • Naomi Jackson • Daryl Jacobson • Sharon Jaffe • Debbie Jahnke • Bob Janssen • Kate Jaycox • Dee Jenkins • Elaine Jervis • Susan Jewett • Tonya Johnson • Dave Johnson • Jeff Johnson • Tricia Johnson • Walter & Harriet Johnson • Alison Jones • Louise Jones • Pam Jones • Vernamarie Jones • Jeff Jontz • Shannon Joyce • Sureeta Kaasan • Jane Kaiser • Mickey Kallas • Veda Kanitz • Vivien Kao • Irene Kasper • Cesia Kearns • Karen Keeney • Jeff Kehrer • Jean Kent • Rich Keppers • Greta Kerkvliet • Heather Kieweg • Tracie Killion • Sharon Kimble • Aaron Kindvall • Margaret Kirkpatrick • Torry Kita • Jerry Klebs • Katie Klemme • Erin Klug • Sheila Knudson • Linda Knutson • Karen Kobey • Katie Koch Laveen • Chris Koelgen • Kathy Kolstad • Patricia L. Koors • Kathy & Mark Kreitzer • Dick Kroener • Sarah Krohn • Bill Kuhbander • Joan Kunz • Karen Land • Nina Langoussis • Connie Lanphear • Derek Lash • Peggine Lashmett-Krypel • Mark & Riley Laulainen • Patricia A. Lawrence • Ceola Lazo • Laura LeBarron • Greg Lecker • Annette LeDuc • Jenny Lehman • Alex Lewanski • Tom Lewanski • Emilie Liepa • Carolyn Lipp • Tami Lodge • Dawn Logelin • Donna Lucas • Jason & Stacy Lunden • Carol Lydell • Mary Kay Lynch • Bill Lyon • Brenda Lyseng • Dan Maas • Derek Madsen • Adam Mahood • Tom Mainz • Peter Mairs • Marie Malinowski • Paul Mandell • Lorrene Maroney • Sarah Marquardt • Ray Marshall • Elizabeth Martina • Jerry Mathiason • Melissa Maxa • Kevin McDonald • John & Olivia McGaha • Rose McGee • Larry McGough • Debra McGovern • Perry McGowan • Dan McGuinness • Lisa McIntire • Pat McKenny • James & Kim McKenzie • Rosh McKinney • Scott McLennan • Cathy McMahon • Denny & Lynne McNamara • Charlotte Means • Tony Medred • Marc & Donna Melrose • Gene Merriam • Elizabeth & Mark Merryman • Carolyn Metcalf • Sara Meyer • Chas & Karen Meyer • Janell Miersch • Scott Milburn • Hokan & Penny Miller • Christine Miller • Kelly Miller • Judith Miranda • Nathan Mitchell • Leslie Modrack • Ted Mondale • Ann Mongoven & Brad Karkkainen • Ron & Kristen Monson • Lynn Moratzka • Cheryl Morgan • Sharon Mortensen • Maik Mosbach • Hans Mouritzen • John Mowery • Mike & Miciah Mueller • Hal & Luann Muller • John & Julie Mulligan • Colleen Mullins • Laura Musacchio • Ron Nargang • Becca Nash • Tony Nelson • Tanya Nelson • Paul Nelson • Brian Nerbonne • Dan Nesler • Ron Nies • Margot Niles • Caitlin O'Neill • Jennifer Oknich • Herbert & Mary Olander • John Olinger • Ed Oliver • Leif Olmanson • Mark Olson • Hillary Oppmann & Andy Holdsworth • Todd Orjala • Rae & Rick Ormsby • Rebekah Ormsby • Michael Osterholm • Jerri & Eric Otterness • Larry Oxendale • June P. • Amy Padden • Carol Parry • Patricia Pasiewicz • Joan Pasiuk • Sage Passi • Donna & John Patterson • Terry Pearson • Michelle & Roy Pederson • Renee Peek • Mike Perry • Jennifer Peterson • Susan Peterson • Nora Pettinger • Anne Phares • Marie Philippi • Nettie Pignotello • Scott Pilgram • David Pinto • Ed Plaster • Renco Poecke • Steve Poncin • Jane Porterfield • Gregory & Pat Pratt • Ami & Jessie Prewitt • Therese Pritchett • Amy Prochniak • Jim Proctor • Dana Prottas • Lisa Pugh • Liz Puhl • Elissa Purvis • Paul Quist • Mary Ellen Radford • Chauncey Raetner • Al Ramsey • Chuck & Elaine Rasch • Rachel Richardson • Jenny & Jessie Richgels • Marcia & Gary Richter • Christina Ricke • Maureen Riddle • Jonathan Riehle & Angela Bohmann • Catherine Rikkens • Kim Ritchie • Roberta Rivard • Phil Riveness • Tom Robinson • Lisa Rojas • Marcia Roley • Evelyn Rolloff • Jen Rosenkoetter • Dianne, Nick & Linnea Rowe • Rebecca Rude • David Rugg • Chris Ruiz • Ryan Ruzek • Candice Sabo-Clegg • Diane Sannes • Trish Schaack • Roger Schaffhausen • William Scheafer • Tess Scheib • Peter Schmidt • Lu Schmidtke • Howard Schneider • Chris Schoenhofen • Cindy Schreiber • Robby Schreiber • Kellie Schweich • Gary & Kathleen Seibert • Gary Seim & Lee Pfannmuller • Julian & Barbara Sellers • Matthew Shandorf • Serenity Shanklin • Jan Shannon • David Shanteau • Jan Shaw Wolff • Janis Shearer • Jerry & Carolyn Lipp Sherman • Pat Sherman • Shelley Shreffler • Katherine Siemens • Laura Simms • Judy & Chris Simon • Matt & Tracy Simpson • Shannon & Chad Skally • Cynthia Slack • Jeff Sluiter • Jim Smetana • Kate Smith • Kevin & Cindy Smith • Kevin Smith • Dwight Smith • Jeff Snyder • Tom Soby • Jodi Sodergren • Paul Sommers • Teresa Sorensen • Chris Sorenson • Erin Souster • Liz Spande • Karen Spruth • Dave Stack • Mary Stade • Robin Stahlberg • Diana Steensland • J. & C. Steigeruss • Robert & Judy Steller • Julie Stoltz • Ken Stone • Larry Storey • Jim Storland • Warren Stortroen • John Stravers • Isabel Strebe • Olivia Strebe • Paul Strebe • Jo Sullivan • Ann Marie Sunderland • Michelle Swedberg • Jeanie Swenson • Chuck T. • Ashley Tabery • Jeanne & Steve Tanamachi • Darcy & Andy Tatham • Roy Tatlonghari • Justin Teerlinck • Nanette Tessier • John Thene • Scott Thiede • Owen Thoele • Vanessa Thompson • Dennis Thompson • Terra Thompson & Jamison Penny • Jordan Tindell • Lyndon Torstenson • Linnea Torstenson • Jane Tunseth • Fred Tyler • Luis Umaña • Megan Unger & Michael Sutz • Michele Vaillancourt & Brent Wennberg • Rebecca Vecoli • Amy Verhoeven • Philip & Mariette Vieth • Darren Vigil • Cliff Voge • Scott Vreeland & Lorie Bergstrom • Cherie Wagner & Derric Pennington • Rich Wahls • Bernie Waibel • Stephanie Waisanen • Dave Walter • Tiffany Wang • Anika Ward • Deb Warren • Cary & Bridgit Waterman • Adrienne Watson • Gavin Watt • Sarah Weaver • Bethany Weber • David Wee • Elizabeth Weis • Melissa Wenzel • Jerry Werle & Donna Mienk • Caleb Werth • Richard Westby • Paul Westby • Steve Weston • Carolyn Westra • Carmella Whaley • Deanna Wiener • Dave Wiggins • Tom & Denise Wilkens • Paul L. Wilson • Chester Wilson & Suzanne Donsky • Jenny Winkelman • John Wise • Laura Wolf • Emily Wolff • Paul Wood • Paul & Megan Wright • Carol Yanisch • Lynne Young • Ron Zickert • Geri Zrust • Dave Zumeta • Steve & Michelle Zwicky

FOUNDATIONS

American Rivers
Elmer & Eleanor Anderson
Foundation
James Ford Bell Foundation
Beim Foundation
Beverly Foundation
Borochoff Family Foundation
Bush Foundation
Patrick & Aimee Butler
Family Foundation
Carolyn Foundation
Critical Connections
Ecolab Foundation
Ecotrust
HRK Foundation
Irwin Andrew Porter
Foundation
Lang Family Foundation
Leuthold Family Foundation
Malcolm Family Trust
Marbrook Foundation
Minnesota Center for
Environmental Advocacy
McKnight Foundation
Minnesota Community
Foundation
Minnesota Environmental
Initiative
Minnesota Environmental
Partnership
National Park Foundation,
Mississippi River Fund
Northern Environmental
Support Trust
Peregrine Capital
Management, Inc. of the
Minneapolis Foundation
Saint Paul Foundation
Unity Avenue Foundation

CORPORATE

3M
American Express
Bank Cherokee
Barr Engineering
Bremer Bank
Brookdale Health
Burlington Northern Sante Fe
Cardinal Realty
CenterPoint Energy
Chipotle
Con-Agra
Flint Hills Resources

Minnesota Chiropractic
Association
Noran Neurological Clinic
Northeast Bank
Patagonia
Recreational Equipment, Inc.
(REI)
Residential Funding
Corporation
RockCorps
Seward Co-op
Summit Brewing Company
Tennant Corporate
Foundation
Wellington Management

GOVERNMENT

Dakota County
City of Hastings
City of Inver Grove Heights
City of Minneapolis
City of Rosemount
City of St. Paul
Lower Phalen Creek Project
Metropolitan Council
Mississippi Watershed
Management Organization
Saint Paul Port Authority
State of Minnesota
U.S. Fish & Wildlife Service
Vermillion River Watershed
Joint Powers Organization

IN KIND

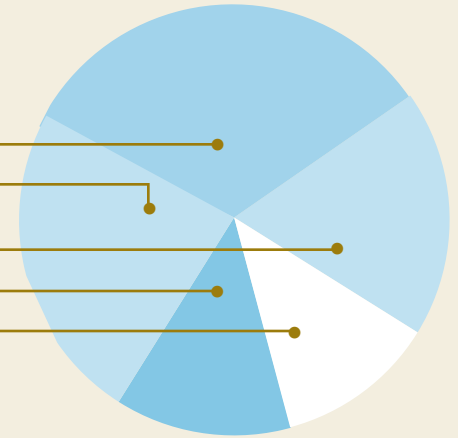
Aggregate Industries
American Canoe Association
Anoka County Parks
Axel's Steakhouse
Bell Canoe
Bending Branches
Big River Magazine
Blue Sky Creamery
Brueggers Bagel Bakery
Buck Hill Ski Area
Cabin Fever Café
Café Eclectic
Champps
Chanhassen Dinner Theater
Chipotle
Christos Greek Restaurant
Clif Bars
Columbia Sportswear
Cub Foods
Einstein Bros. Bagels
French Meadow Bakery
Gerber Legendary Blades
Granite Gear

Great Harvest Bakery
Guthrie Theater
Helly Hansen
Historic Fort Snelling
Hoigaards
Impressive Print
Jay's Café
Catherine Johnson, Artist
Kare 11
Landscape Alternatives
Mall of America
Manage.net
Maynard's Restaurant
Midwest Mountaineering
Mill City Museum
Minnesota Twins
Mpls. St. Paul Magazine
Mississippi Market
Northwest Canoe
Northwestern Health
Sciences University
Old Log Theater
PB Loco
Paddler Magazine
Pajunas Interactive, Inc.
Panera Bread
Patagonia
Peace Coffee
Pizza Luce
Praena on Main
Premium Waters
Recreational Equipment, Inc.
(REI)
Sawbill Canoe Outfitters
Seakayaker Magazine
Seward Co-op
Saint Paul Pioneer Press
Saint Paul Saints
Summit Brewing Company
Thorwood Inns
Thousand Hills Cattle Co.
Tuggs Tavern
NWHHSU University School
of Massage
Vacation Sports
Vic's Dining
Visual Addiction Tattooing
Walker Art Center
Wallinga Design
Wavelength Paddling
Magazine
Welch Village
Wenonah Canoe
White Wilderness Sled Dog
Adventures
Youth Performance Company
YWCA - Mpls. & St. Paul

2005 Financial Statement

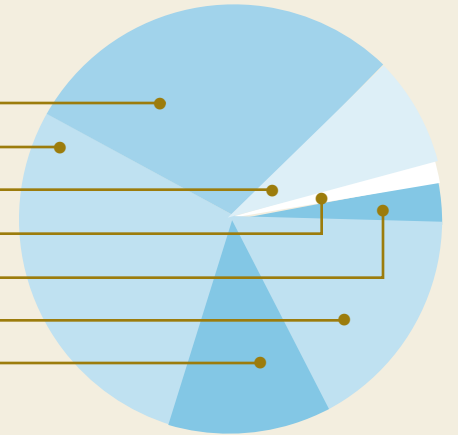
EXPENSES

Program	\$801,464.00	75.64%
Land Conservation	\$365,831.00	34.52%
Watershed Protection	\$241,023.00	22.75%
River Corridor Stewardship	\$194,610.00	18.37%
Fundraising	\$133,670.00	12.61%
Management	\$124,485.00	11.75%
TOTAL EXPENSES	\$1,059,619.00	



REVENUE

Foundations	\$303,803.00	27.50%
Government	\$293,500.00	26.57%
Other	\$81,419.00	7.37%
Fees	\$8,283.00	0.75%
Workplace Giving	\$39,567.00	3.58%
Individuals	\$229,310.00	20.76%
Corporations	\$148,783.00	13.47%
TOTAL REVENUE	\$1,104,665.00	



From an independent audit conducted by Judd,
Ostermann and Demro, Ltd., Certified Public Accountants.

FMR is pleased to meet all the accountability standards of the Charities
Review Council of Minnesota.



FMR is a proud member of the Minnesota Environmental Fund

Donors

\$1000 AND UP Anonymous (3) • Tom & Ellie Crosby • Eaton Vance Management • Tom Kelley & Kathy Stack • Margery Martin • Diane Sannes • Tina & Archie Smith **\$500 TO \$999** Anonymous (1)

• Gina Bonsignore & Rick Garber • Eugene & Jane Borochoff • Lisa Doerr & Ron Erickson • George Dunn & Donna Harris • Forrest & Lisa Flint • Peter & Mary Gove • Timothy Hunecke • Art & Martha Kaemmer • Philip Klitzke • Dr. David & Ellen Knighton • Joan Kreider • Perry McGowan & Sheila Smith • Don J. Miller • Phil Riveness • William L. Tilton • Deanna Wiener & Jim Tilsen • Hendry Family Foundation **\$100 TO \$499** • Anonymous (3) • Gloria Ackerson • Berny Ackley & Barb Pokela • Clifton Aichinger • Roger & Sue Aiken • Erick Ajax & Kristen Olsen • Henry Albrecht • Kathleen Anderson • John Anfinson • Ellen Anthony • Mary Kay Arthur • Peter Bachman & Janet Rice • Max Bade • Barbara Cox & Joseph Bagnoli • Shawn Bartsh • Jeffrey P. Beale Charitable Gift Trust • Rick Beard • Scott Beers • Carey Bell • Elizabeth & Tom Bell • Tim Bell • Harrison & Patti Benjamin • Kelly Bent • Charles Bernard • Charlie Betz & Sue Magdalene • Martha Brand & Gerald Rosen • John F. Brandes • David Braslau • Andy Brown • Carolyn Buck • Becky Burdick • Mark Burgess • Philip Burke • Jonathan Burris • Robert Bussell • Lori Cade • Ann Calvert • Irma Cameron • Candace Campbell • Corrin Campbell • Cory & Ellen Campbell • Randall Carlson • Kathy Carnazzo • Harlan Cavert • H. Mead & June Cavert • Frank B. Cerra • John Chaffee • Bruce Chamberlain • Jeanne Chapdelaine • Steven Christenson • Carrie & Chet Cisek • Bill & Sharon Clapp • Whitney & Sarah Clark • Naomi Cohn • Linda Colburn • Patti Combs • Debbie Cooper • Jay & Page Cowles • John & Sage Cowles • Charles Crandle • Paul & Georgia Crockett • David P. Crosby • Stewart & Lesley Crosby • Douglas & Wendy Dayton • Edward Dayton • Paula De Cosse • Tony & Brigit DiBartolo • Shirley Diercks • Dianna Diers • Scott Dohmen • Sara Eaton • Penny Eldridge • Robert Engberg • Matt Entenza & Lois Quam • Brandon Eppert • Bill & Kay Erickson • Richard Fairou • Nancy & Robert Feldman • Kim Feller & Gary Wirth • Patricia Ferrian • Ron & Terry Ferriss • Tom Fetter • Shawn Finn • Jim Fitzpatrick • Steve Flagg • Donald J. Fluegel • Dallas Fogg • Meg Forney & Jon Fagerson • Bill & Judy Franke • Brad Frederiksen • Nita & Mike Fronk • Susan Funk & Wood Kidner • Jeffrey Gegner • Mr. & Mrs. R. James Gesell • Peter Gillette • Jim Glendening • Lyn Glenn • Gloria Goodwin Raheja & Philip W. Getts • Peter J. Goss • John & Mary Gould • Dan Graf • Gail Graham • Richard W. Grimes • Ted & Michele Grindal • Anne Marie Gromme • Karen Gutierrez • Kathleen Haas • Susan Haigh • William Halfrich • Ruth Halvorson • Joe Harris • M. Ali & Lorretta Hasan • Bud & Carol Hayden • David & Susan Hendrickson • Alfredo Herrera Martinez • Sheryl Herrick • Bernie Hesse • Richard Higgins • Kate Higgins • Chris Higgins • Eric Hoggard • Rachel Holdstad • Keith Holm • Greg & Becky Hoops • Janet Hostetter • Patsy & Bob Huberty • Debbie Huff • Alice Hunt • Patricia Hurd • Clyde Illg • Mari B. Ito • David & Sharon Jasper • Kate Jaycox & Mike Hatting • Dave Jennings • Cameron Johnson • Sarah Johnson • Wendy Johnson-Ness • Irene Jones • Roger and Louise Jones • Penny Judson • Donald & Phyllis Kahn • Sylvia & Sam Kaplan • Keith & Valda Kaye • Thomas & Marlene Kayser • Keith Keeling • Don & Cathy Keller • Gordon & Diane Kepner • Thomas & Jonathan Keppers • Constance Kerrins • Bruce Kessel • Cathy & Michael King • Craig & Jill Klausung • Dr. Kurt Klotzbuecher & Dr. Karen Weidner • Hana & Lubo Koudelka • Ken Kozachok • Leslie & Susan Kraus • Geraldine Krueger • Todd Kruse • Cynthia Kunz • David Kunz • Zach Kunz • Nik Larsen • Bruce & Sue Larson • John Lawrie • John & Kay Leadholm • Greg Lecker • Olivia Ledee • Jeff Lee & Esther Derby • Kristine Legler Kaplan • Duane Lengsfeld • Kathleen Lepp • Cliff & Jean Lewis • Helen Lichtler • Bert Liebmann • Georgia Ray Lindeke • Sandi Lindgre • Sandi Lindgren • Kathryn Linhoff • Karen Linner & Lester Shen • Charlene Lofgren • Gary Lucas • Peggy & David Lucas • Chuck Lutz • Marsha C. Macey • Bob MacIntosh • Mary Jane Madden • Tom & Phyllis Mahan • Richard Manka & Karen Ringsred • Marie Manthey • Helena Mares • Abby & Donald Marier • Meg McCormick • Lisa McDonald & George Soule • Debra McGovern • Lynne McMackin • Denny & Lynne McNamara • Peter Menge • Dale & Suzanne Merriman • Dorothy & Jack Merwin • Mary Mickus • Amy Middleton & Therese Durkin • Pat Mierek • Ann Miksch • Bill Milbrath • Hokan & Penny Miller • Todd Miron • Theresa & John Mlinar • Lynn & Tim Moratzka • Jon & Louise Morgan • Erin Munkeby • Brad Murray • Judd Nelson • Randy Nelson • Susan Nelson • Wayne Nelson & Lynn Huntoon • Mike Nesseth • Lucia B. Newell • Mark & Jackie Nolan • Riva Nolley • Mary K. Norris • Jim Nystrom • Gary Oberts • Edward Oliver • Thomas Ormand • Gabe Ormsby • Rae & Rick Ormsby • Michael Osterholm • Allan & Dru Osterud • Constance Otis • Jennifer Page • Marjorie & Mark Paller • Francine Pass • Jeffery Paulsen • Dave Pawlyshyn • Shirley Pearl • Chuck & Ellen Peck • Romeo Perez • Kim Petersen • Thomas Plegemann • Sherwood Pomeroy • Rex Porter & Deb Todhunter • Gayle Prest • Michael & Lyne Prichard • Damon Ray • Gene & Judy Rayburn • Jonathan Riehle & Angela Bohmann • Claudia Risnes • Jean Roberts • Richard Roessler • Craig Russ • Nancy Salazar • Mary Salisbury • Tom Salonek • Michael Schaenen • Konrad Schmidt • Steve Schneeberger • Nancy Schouweiler • Dave Schuller • Gerald Seck • Meghan Shea • Jerry Sherman & Carolyn Lipp • Elizabeth Shier • John Shier • R. Curt & Romalyn Shreve • Grady Shuck • Harry Sieben • William & Joyce Sieben • Steve Sikora & Lynette Erickson-Sikora • Katharine Simon-Dastyeh & Gerald Dastyeh • Al Singer • Lawrence Sinsimer • Paul & Erika Sitz • Bob Slauson • Susan Slauson • Kate Smith • Larry Soderholm & Judy Parr • Evelyn R. Solomon • John & Marsha Soucheray • Sylvia Soucheray • Shane Sparks • Tonya Splees • Will Steger • Kathy Surridge • Payson Swaffield • Jeffrey Sweet • Masanao Takahashi • Louis Tally • Lisa & Chad Tenkley • Scott Thiede • Patricia Thielen • Bruce & Merry Jo Thoele • David Thompson • Karen Tillmann • Robert Tilsen • Mary Tkach • William Tobakos • Cathy Tobias & Bryan Michael • Lyndon Torstenson • Steve Towle • Mike Trebing • JoAnne Tromiczak-Neid • Ted Tucker • David & Lynn Van der Haar • Gary Van Erp • Aaron Van Moorlehem • Angus M. Vaughan • Linda & Tom Veblen • Sue Vento • Paul & Carolyn Verret • Phil & Joanne Von Blon • Mark Wagner • David Waldemar • Mary Warpeha • Ryan Weaver • Robert White • Aina M. Wiklund • Mark Wilke • Gail Wilson • Douglas Winn • Terry Woeltge • Luann Woeltge • Kay Yanish & Martin Dietl • Rob Yenne • Nell & Mark Ytsma Sauer • Richard Zarnbinski • Richard Zgodava **\$50 TO \$99** Anonymous (5) • Mary Aarons • Marian Adcock • Alfred & Dorothee Aeppli • Don Aggerbeck & Jane Pederson • Sonja Almlie • Frank Altman • Christine Anderson • Kathleen Anderson • Sherry K. Anderson • Caitlin Anfinson • Eric Anfinson • Alycia Ashburn • Mary Avery • Thomas Bahe • John & Anita Bahls • Dr. Michael & Margaret Bahr • Scott Bakken • Faith Balch • Candace Barrett • Claire L. Barry • Bernard Barton • Michelle Basman • Gregory & Coral Bastien • Greg Beatty • Diane Bedell • Martha Benoit • David Berge • Dave & Sue Betzler • Michael Bischoff • Sandee Blanchard • Mark Blumberg • Sharon & Harold Bobgan • Anthony Borgert • Michael Botthof • Warren Bowles • Erin Bowley & Jeremy Szopinski • Elizabeth Brackett • Jean Brandes • Erik & Hanna Brandt • Johnny Braude • Jessica Braun, CMT • Edna Brazaitis • Paul & Martha Brennecke • Arthur Brodersen • Kris Brodersen & Sharon Kimble • Terry Brueck & Kathryn Mitchell • Cheryl Bruner • Steve & Linda Bryan • Steve Bubul & Lee Lewis • Donald N. Buck • Ellis Bullock • Mark Bundgaard • James Burns • Linda Bush • Mary Cady & Steve McCauley • Ulla Camene • Wayne Carlson • Gregory Carlson • Alan & Jill Carlson • Mark J. Carpenter & Ann Kraemer • Theresa Carr • Susan Carter • Paul & Millie Caspersen • James & Margaret Caturia • Natalie J. Chapman • Laurie Chasteen & Gary Douglas Laurent • Isaac Cheifetz • Milton C. Chester • Janet & Robert Christianson Jr • Chester & Josephine Cizio • Anne Clark • Sandra Clark • C. Carlyle & Dawn Clawson • James Cloyd • Eileen Collard • Carolee Colter • Tim Commers • Doug Connell • Jessica Cook • Andrew N. Cook • Francine Corcoran • Kathleen Corley • Mary & Bob Buck Courteau • Lucy Crea • John & Eva Cross • Colleen Curran • John Curry • Marianne D'Angelo • Pam Damer • Susan Gail Danielson • Mark Davidson • Mary Ellen Davis • Byron de Jesus • Susan De Vries • Anthony DeMars • Timothy DePumpo • George & Brenda Dickison • Kay & Kyle Dickison • Bernice Dickson • James Dinerstein • Ron & Barb Dody • Glenys Dolan • Steve Dondlinger • Mary-Carolyn Dorfman • Dorothy Anne Drake • Leah Dunn • Mary Dunst • Rae K. Eighmey • Dohn Fadden • Charles Finn • Richard Fish • Michael D. Foley • Ronald Fosse • Tom Fraser & Mary Strand • Ronald Frazzini • Tracy Fredin • Eric & Kris Freeburg • Arlene Fried • Hollis Fritts, Jr. & Nancy Kallio • Sue Fulks • Diane Garetz • Kristin Garwick • Larry & Patty Gavin • Mary & Jack Goodrich • Steve Goodrich • Siana Goodwin • Michael Gorman • Gregory Grau • Matthew Grigal • Michael Guest • Karen Gulliver • Vern Gunderson • Tom Gunderson • Richard Gwynne • Wendy Haan • Jim Haefemeyer • Karin Hakanson • David & Lorna Halaas • William & Donna Halverstadt • Christopher Hanson • Terri Hanson • Shari Hanson • Margaret Harder • Janis Harrington • Eric Hart • Dick & Ronnie Hartman • Kathy Haugrud • John Hedin • Rosalie Heffelfinger Hall • Elizabeth A. Hentges • Jeffrey Hesselbein • Christina Hettig • Samuel Hinz • James Hoffman • John C. Holman • Mark Hove • Elsbeth Howe • Melany Hunt • Ida Lee Hurvitz • Tim Hyde • William Iacono • Lisa Isenberg & Philip Friedlund • Betti Iwanski & Kevin Alexander • Russel Jackson • Susu Jeffrey • Sarah & Roger Jensen • Elaine Jervis • Cindy Jeska • Edith Johnson • Marion Johnson • Michele & Timothy Johnson • Susan Johnson • Trip Johnson & Nara Laurel Topp • Wendy Johnson • Nathan & Laura Jones • Phyllis Jones • Linda A. Jorn • Frank Jossi • Judith Kahn • Dana Kaiser • Frederick Kaiser • Judy Kammer • Tecla Karpen • Martin & Esther Kellogg • Todd Kerkow & Amber Setter • Al &

Joey Kettelkamp • Kenneth & Carol Kidder • Louis Kidder • Sharon Kimble • Anita Kimmes • Robert J. Kiner • Lori King • Audrey Kingstrom • Kathy Kinzig • Robert Kistler • Douglas & Virginia Knapp • Karen Kobey • Emily & Michael Koch • Thomas Kottke • Sandra J. Krebsbach • Merrill & Ardelle Krech • Mary Ann Kristyniak • Ron Kroese & Kimberly Colburn • Karen Kruse • Linda & Chris LaBarre • Kevin Lally • Jeanne C. Landkamer • Connie Lanphear • Patricia A. Lawrence • Charles Leavitt • Dianne Leider • Kurt Leuthold • Scott Levandowski • Rand Levy • Ann Lewandowski & Jim Howitt • Beth Lilja • Mike & Pat Loosen • Dean Loss • Ken Lubinski • James Luby • William & Lorraine Leud • Mary Ann & John Lundquist • Robin Luther • Luther's Hudson Chevrolet • Peggy Lynch • Michelle Lynskey • Nicole Ann Lynskey • Susan & Albert Madison • Gordon Maltby • Susan Marino • Sarah Marquardt • Steve Marquardt • Vina Marquart & Karl Nilsson • Gwen Martin • Gary Marx • Jeffrey Masco • Margaret Mazzaferro • Mike & Kay McCarthy • David McDonald • Martha McGann • Jason McGrath • Craig McHenry • Julie McKane • Kathleen McTighe • Charlotte Means • Debbie Meister & Gene Christenson • Steve Mercil • Tom Meyer • Susan S. Meyers • Susan Mielenhausen • Lois Mizuno • Sheila Mary Moran • Paul & Susan More • Jeylan Mortimer & Jeffrey Broadbent • Jackie Mosio • Paul Moss & Craig Miller • J. Jay Mutschler • Mark Mutziger • Jennifer Naas • Elsie Naylor • Donna Neff • Clark Nelson • John Nelson • Randy Neprash, Sara Barsel & Hannah Neprash • Nevin Nolder • Gary & Kristin Oberts • David C. O'Brien • Susan Odegard Wood • Jesse Okie • Char & Tharlie Olson • Janet Olson • John Olson • Liz Oppenheimer • Jo Ann E. Ormand • Rebekah Ormsby • Gregory Page • Debra Palmquist • Eric Pass • Alan & Cyndy Paulson • Kathryn Paulson • Curtis & Carolyn Pedersen • Lindy Pederson • Mark Peller • Carron Perry • Mark Peschel • Roger Peters • Ann M. Petersen • Jay Peterson & Kathy Ripke • Linder Peterson • Vernon Peterson • Judith Pfankuch • Fred Poehler • Dave Polaschek • Anil K. and Clare M. Poulouse • Kathleen Premo • Barb Proost • Debra Pursley & Barry Reimnitz • William E. Quick • Christopher Quinn • Janet Rasmussen • Janelle Rau-Clauson • Brooke Reed • Jennifer Reedy • Fred Reese • Roman Richardson • Marcia & Gary Richter • Joy Ridley • David Rischall • Erik Rivenes • Frank & Janet Rog • Robert Rohlf • Jeff D. Rohlinger • Janice Roller • Brad & Pam Rosch • Shelley Rose • Roberta Rott • Brynhild Rowberger • Sandra & Arthur Roy • James W. Rustad • Laurie Ryan • Soren Ryberg • Gretchen & Paul Sabel • Bernice & Ernest Salmela • Michael H. Samuels • Elizabeth Z. Savage • Mike Schendel • Karen Schik • Peter Schlesinger • David Schluchter • Kathy Schoen • John Schroeder • Sally Schroeder • Brian Shaughnessy • James Shaughnessy • Dan & Kathleen Shea • Lee Sheehy • Fran Shepardson • Rebecca & John Shockley • Shelley Shreffler • Becci Siegle • James S. Simonson • Steve Sitte • Richard & Ella Slade • Brett Smith • Howell Smith II • Kim Snow • Leif & Jeanne Solberg • Clarence & La Vonne Soleim • Richard Solomon • Cecily Sommers • Kathleen & Gerald Sovell • Susan Spector • Gayle & Anthony Stelter • Mike & Jennifer Stensrud • Christy Stevens • Claire Stokes • Roberta A. Strauss • Kent Streibel • Patty Suess • Mary Sullivan • Jessica Sundell • Donald J. Swanson • Michael Swift • Gregg Ten Eyck • Mark Ten Eyck & Laraye Osborne • Susan Tincher • Mary Tingerthal & Conrad Soderholm • Elena Tivyan & Felix Sahlin • Joseph Tombers • Joel & Elizabeth Trinkle • Tom Triplett • William Umscheid • Peg & Bill Unger • Michele Vaillancourt & Brent Wennberg • Nancy Van Dyken • Jane Vanderpoel & Kevin Gutknecht • Lisa Vecoli & Marjean Hoeft • Robert Vogel • Mary Volk • Steven & Monica Wahls • Susan & Philip Wahls • Bernard Waibel • Lillian Wallis • Liz Walton • Maureen Walton & John Smetana • Mary M. Wamsley • Denis Warta • Thomas Warth • Thomas F. Waters • Nick Watts • Craig & Nancy Weflen • Marjorie & Edward Weidner • Ron Welbaum • Marvin & Connie Wenzel • Steve Weston • John and Cooki Westrum • Stephen Wiley • Frank S. Wilkinson • Evan Williams • Joan Williams • Dennis & Kathryn Wippering • Dr. Stephen F. Wolf • Ethel H. Wonson • Joanne Wyatt • John & Patricia Yaeger • Evelyn Young • Minyuan Zhao • Susan & Steve Zimmerman • Harvey Zuckman • Steve & Michelle Zwicky **\$1 TO \$49** Anonymous (5) • Jeff Aamot • Gini Aasen • James Adams • Duke Addicks • L. Thomas Aeshliman • Cheri Affeldt • Jerry Agnes • Susan Ahlers • Prudence Ahrens • Donna Aldama • Eileen Allison • Tanya Alsp • Kiel Alward • Wendy Andberg • Allen Anderson • Anne M. Anderson • Carol A. Andersen • Carole Andersen • Chris J. Anderson • Darrell A. Anderson • Darsi Anderson • Elwood W. Anderson • Emily Anderson • Gary Anderson • Gary W. Anderson • Gerald Anderson • Holly Anderson • Jan & Paul Anderson • Keith Anderson • Margaret Anderson • Matt & Yvonne Anderson • Norman Anderson • Tara Anderson • Tim Anderson • Vicki Anderson • Chuck Andrews • Jeff & Debbie Anlauf • Scott Appelwick & Edward Sootsman • Phillip & Gail Applegate • Richard Fred Arey • John & Barb Armour • Ms. Miriam Arneson • Brenda Arnold • Valerie Arnold • Terryl Arola • Renee G. Arrowood • Carol Atkinson • Judy Aubert • Margaret Augustine • Paul D. Axtell • Mary Jean Babcock • Julie Bach & Scott Brownlee • Bruce Bacon • Mr. & Mrs. Douglas Bade • L.J. Bagley • Jerry Bahls • Karen Bailey • Robert Bailey • Lynne Baker • Ray Baliaco • Urduja Baliaco • Robert Ball • Roxy Ballard • Brian Balleria & Joan Bechtold • Deborah Balli • Charles Bankey • Shannon Barber • Colleen Barden • Vivian Bardwell & David Zarkower • Katheline Barnes • Thomas & Margaret Barrett • Mrs. Harriet Bart • Leora Barthel • Rev. John P. Bartholomew • Bob Bartlett • William & Michelle Barton • Letitia Basford • Ted Bates • Kenneth Bauer • Nick Bauer • Pat Bauer • Deborah Bayles • Richard Bear • Brian Beaubien • Tom Beck • Marilyn Becker • Stephanie Beigbeder • Virginia Belden-Charles & Daniel Charles • Sue Beljeski • Bob & Bev Beljeski • Carole Bell • Dick & Linda Bell • Kenneth Bellow • Daniel & Susan Bembek • William J. Bemrick • Irene Bender • Karen M. Bendtsen • Susan Benjamin • Bradley Benn • Elisabeth Bennett • Toni Bennett • Barbara & Steven Benson • Jeff Benson • Carole Benzick • Doris A. Berg • Ed Berg • Dennis Berklund • Jeremy and Bat-Sheva Berman • Liz Bernstein • Judith Bertrand • Sid Berquam • Tim Bersie-Mize • Dale Beskau • Michael & Ruth Bettendorf • Orval Bies • Dave & Barb Bipes • Kate Bispala • Susan Bjerke • Judy & Bob Bjorke • Carsten O. Bjornstad • Tom Blanchard • Philip M. Bly • Ruth Bly • Mary Bock • Charlotte Bodene • Thelma Boeder • Julia Bogorad & Peter Kogan • Dal Bolt • Gary Bolt • Judith Bonniwell • Roy Booth • Lynn Borden • Peter A. Borden • Melissa & Kristopher Borgert • Nancy Bork • Ruth Boser • Eileen Bostad • David & Sharon Boudreau • Frank Bowden • Joel Bowles • Dustin Boyd • Steve & Kathy Boyd • Kristy Boyum • Ray and Lucy Brandes • Jim Brandes • Steve Brandes • Jennifer Brandl • Candace & Rodney Brandt • Jason & Patty Branham • Pam Braniund • Carol Brant • Mark Brantner • Patti Brase • Don & Gudrun Brauer • Beatrice J. Braun • Jodi Brecht • Aviva Breen • Penelope Breitlow • Therese Brennan • David Brenner • Karen Breva • Mindy Breva • J. Brisbin • Roger & Ronnie Brooks • Virginia Brooks • Patricia Brophy • Gary Brost • Burton & Darlene Broste • Cynthia & Steven Broste • Amy Brown • Mary G. Brown • Linda Brown • James L. Brudvig • Paula J. Brugge • David & Cindy Brush • Priscilla Bue • Kathy Buhaug • Carol Bungert • Maryln Bunzo • Chris Burda • Jacob Burggraff • Dennis Burke • Carol Burkhardt • Elizabeth Burns • Scott Burns • Trish Butler • Jeffrey Byers • Renee Cahill • Clifford Caine • Susan Cairn • Pauline Callahan • Robert & Marjana Callery • Ann Marie Cambronne • Ronald G. Campbell • Mildred L. Carbonneau • Alycia Cardwell • George L. Carlson • Kathy & Ron Carlson • Dale Carlson • Craig Carlson • Mitch Caron • Missy Caron-Thompson • Carolyn Carr & Jonathan Sellman • Andrew Carter • Barbara Carter • Margie Casey • Nancy Cass • Alice J. Cederberg • Richard Chalmers • Jerry Chamberlain • Kevin Chamberlain • Karen Chandler • Susan Jane Cheney & David Arbeit • Jeanne & Terry Cherner • Scott Chesebrough • Jean Chesley • Erin Chisholm • Chientzu Chou • John Christensen • Kent & Marilyn Christensen • Wayne Chrystal • Joseph & Marlys Chutich • Grace W. Clark • Kurt Clark • Katie Clayton • Barry Clegg • Roger Clemence • Dave Clements • Robert Close • Jenifer Cloutier • Susan B. Cobin • Elaine & Foster Cole • Jean Coleman • Tanya Coleman • Lola Coles • Ken Collier • Mr. & Ms. Condons • John Conelly • Beverly Conerton • Michael & Janet Conway • Jonathan E. Cook • Thomas Coombs • Sara & Michael Corcoran • Stewart Corn & Ellen Ferrari • Brian Cornell • Don & Nancy Corniea • Jim & Mary Councilman • Yvonne Cournoyer • Nino Courteau • Josh Courteau • Aaron Courteau • David Craigmile • Tom & Endrene Crampton • Judy Crandall • Larry Crane • Monica Crea • Brewster Crosby • William Crosley • Carla Cross • Mary Anne Cummings • Carl Cummins • Lisa Cumpston • David Cunningham • Michael and Judith Curtis • Nola & Paul Cutts • James & Theresa Czech • John Czech • Louis Czech • Mavis Daffer • Richard & Marjorie Dahlager • Mike Dahlin • Jon Dahlin • Nancy Dale • Tim Daley • Eva Daniels • Kathleen Daniels & Marcie Myers • Avril Danziger • Deborah Dapkus • Dennis Darnick • Richard Darsow • Lori Davidson • Keith Davidson • Chase Davies • Pat Davies • Phil Davies • Mark & Mary Ann Davis • Herb Day • John Dean • Margaret Mary Dean • Betty Z. Deane • Amelia DeBaggis • Barbara DeFoe • Virginia Degennaro • Diane Deibele • Eric DeKleyn • Robert & Michelle Delaune • William Delmont • Sandra DeMarais • Sandra Demontille • Dave Dempsey • Don and Marlene Dempsey • Chris DeNatale • Albert DeNigris • David Desjardins • Susan Desjardins • Margarete Desotelle & William Hornung • John DeWitt • Dawn Dexter • Heather Diaz • George & Mary Dickison • Arthur D. Dickson • Mary L. Dietz • James Dimick • Mark DiPasquale • Clayton Diskerud • Katherine Ditter • Woody Dixon • Dona Dochniak • Norma Doerfler • Priscilla Dombek • Nick Domer • Dan Donnelly • Margaret Donohue • Kathleen Dougherty • Linda Dowell • Scott Draheim • Jim & Carole Drake • Bob & Rose Drehmel • Donna Drewick • Terrance L. Dreyer • Wanda Kittelson Driver • Bill Droste • James Duarte • David Duba • Harriet & Dick Duerre • Andrew Dufresne • Ralph & Kathi Dumond • John Dundon • David Dunn • Robert & Bette Dunn • Thomas Dunst • Phil Duran • Howard Durner • Leif & Sine Duus • Peretz Dworsky • Melissa

Dybas • Nancy K. Eaton • Jane Elizabeth Eaton • Sharman Ebinger • Joan Eckerly • Peter Eckhoff • Donald K. Eddy • Chad Edenborg • Barbara Edgar • William & Jean Edgeworth • Eric Edwalds • William R. Egan • David & Debbi Eggenberger • Laurence Ehrlich • Virginia K. Ekola-Reeves • Scott Elkins • John & Dawn Ellis • Nick & Lisa Elmquist • Susan Elsnor • John & Ann Elward • John Enblom • Vernon Engel • Clem Engen • Pamela & Warren Enger • Jeffrey Engholm • Steven & Carol Engquist • Lillie Erickson • Elaine Erickson • Theodore D. Erickson • Craig Erickson • Joe & Sue Eschenbacher • Natalie Espy • Andrea Essling • Elaine Mae Estabrooks • Jan Estep • Gail Ewanyk • Sarah & Mark Fabel • Kim & Paul Falde • Ronald Falk • Duane & Candis Fancher • Naomi Farabee • Jason & Becky Farber • Mike & Michelle Farber • Alan Faust • Sharon Feiner • Sarah Feldt • Janet Felsing • Doug Fensand • Kay Ferguson • John Ferm • Randy & Kathy Ferrin • Alma Field • Marcella Filipczak • Michelle Filkins • Margy Filson • Gregory Finzell • Bonita Fisher • Chris Fitzmorris • Talisyn Flagg • Martin P. Flaherty • Laurie Flicek • Daniel Flo • Betty Flynn • Patricia Flynn & Darryl Schwerzler • Rosemary Foley • Joe & Mary Forpahl • Clare Fossum • Helen Foster & Frederick Cooper • Jim Fournier • Katie & Rick Fournier • Corinne Fowler • Kirk D. Fowler • Norman & Paula Fox • Erin Fox • Barbara B. Franklin • Kathleen Franzen • Debra Frasier & Ian Hunter • B. Frederick • Sharon & John Freeburg • Theodore Frericks • Cliff Frey • Elizabeth Frick • Norma K. Friedrichs • Jodi & Kyle Fritsche • Axel M. Fritz, Jr. • Jonathan Fruen • Wayne & Sherri Fuller • Joan Furlong & Randy Strobel • Meta Gaertner • Jim Gagnon • Dan Galbreath • Susan Galeota • Katie Galloway • Charles Ganz • Kimberly A. Ganzer-Wiley • Juanita Garciamogday • Diane Garetz • Bob Gasch • John & Linda Hayes Gauthier • Kelly Gavigan • Colleen M. Gavin • David Geddes • Mona Geeting • Charlie Gegzna • Patricia & Jerry Gerber • Steve Gibbs • Jacqueline Gierymski • Sheldon D. Gifford • Lonnie D. Gilbertson • Randy Gillenwaters • Rhoda R. Gilman • Gary Gilmer • Vickie Gilmer • Barbara Gilmore • Brenda & Eric Gilsrud • Karen Gjerstad & Kent Simon • Paul Glander • Julie Glanton • Tatjana Gleixner & Randy Kvale • Tony Goddard • Tom & Cindy Godfrey • Ann & Otis Godfrey • C. Brien Godfrey & Christine Hult • Marge Goldberg • Nathan Golin • Allen Gooch • Norm Good • Timothy & Anne Goodman • Pete Goodrich • John Goodrich • Jill Goodrich & Terry Dunst • Michael & Mary Gormley • Jon Kevin Gossett • Marion Gottlieb • William C. Goude • Troy Gourde • Robert Govelitz • Clarice Graham • Stanley Graham • Catherine Hallie Grant • Diane Gray • Sue Gray • Dan & Karen Green • Vineta Greene • Theodore Greenfield • Paul & Ling Greenwald • Windy & Pat Gregg • Dale Grenke • Frank Griffin • Denise E. Griffith • Todd Grise • Richard Groh • Jon & Betty Gross • Annette & Joe Gruba • Allen Gruidl • John Gulla & Andrea Godbout • Hugh & Maureen Guscetti • James & Kathleen Gustafson • LeeAnn Gustafson • Simon Gyasi • Ralph Haas • Linnea Hadaway • Mary Jane Haemig • Joel Haggerty • Joseph Halaas • Myrna Halbach • Judith Hale • Rex & Jaci Hale • Jon & Diane Hallberg • Pamela Halling • Justin & Jenny Hallquist • Barbara Hamilton • Donald Hammen • Leigh Hansen • Rick & Suzanne Hansen • Angela Hanson • Chris Hanson • John Hanson • Michelle Hanson • Emily Hanson • Rose Hanson • Michele Hanson • Doug Harden • Cindy Harden • Jenny Harrell • Michael & Lucinda Harriage • Dr. Benjamin R. Harriman • Darlene Harris • Larry & Marion Harris • Kathleen Harrison • Chris Hartman • Sarah Hartman • Thomas E. Hartman • Charles Hartwell • Chico Hathaway • Dennis Hauck • Cathleen Hauenstein • Bob & Donna Haugen • Lucinda Hawker • John C. Hay & Martha L. Wegner • Andy Haynes • Heather Haynes • Tom Alsides • Matthew Hazzard • Terry Headley • Elisabeth Heefner • Chris Heeter • Catherine M. Hegg • Vickie Heggen • Dick Heglund • Bill Heiberger • Robert Hein • Mary Heinz • Paul & Jessica Heiring • Tom Heitpas • Sonja Helgesen • John Helgeson • Dorothea Helmen • Gretchen Helmer • Mary Heltsley • Melanie L. Helvig • Carl & Judy Hemp • Jennifer Hennemuth • Heidi Hennen • Cathy Hennessy • Lyle Henning • Finn & Jorunn Henriksen • LeAnn Henschke • John Hensel • James Herbert • Colleen Herrmann • James Higgins • Mary Hilfiker • Greg Hill • Glen Hillestad • Arthur Turovh Himmelman • Andrew Hine • Barbara J. Hinz • Elizabeth Hinz • Christa Hinz Lambrecht • Carol & Walter Hirsche • Sylvia Hitchcock • Jan Hively • Andrea Hjelm • Trudy Hoag • Mary E. Hodek • Bruce & Dorothy Hoem • Susan & Charlie Hoffman • Ted Hoffman, Jr. • Ross Hokom • Joe Holewa • Greg & Linka Holey • Jim Hollnagel • Mark Holmes • Wayne Holmgren • Bob Holritz • Herb & Mary Holt • Robert L. Holt • Michael & Joan Holtz • Bonnie B. Holtzman • Anne M. Holzinger • Dale Homuth • Christopher Honda • Lynel Honerman • Tom & Linda Honse • Barb Hoops • Christine Hope • Louise Hopkins • John Horoshak • Julia Houg • Katie Houghtaling • Skip & Ellen Houghton • Sandra Howard • John Howe • Susan Hubbard • Michael Huber • Rose Huck • Brian Hughes & Karma Geiger • Celeste Hughes • Scott Humphrey • Margaret (Peg) Hunt • Marnie Hunt • Yvonne and James Hunter • Charles Huntley • Marilyn Hupfeld • Lori K. Hutchings • Jenna Hutchinson • Mildred Huttenmaier • Denise Hyde • Eva Hyvarinen • Lucy Imholte • Bret Indrelee • Gloria Ingberg • Barbara Ingebrigtson • Marjorie Ireland • Phyllis K. Isaacson • Vernon & Patricia Isaak • Steven C. Isakson • Tiffany Iten • Diane Iten • Andrea Iten • Matt Iverson • Edward Jackson • Naomi Jackson • Scott & Martha Jacobs • Julie Jacobs • Jim & Marjorie Jacobsen • Helen Jacobson • Andreas Jaeger • Richard Jaeger & Jennifer Schuster • Kathleen Jaglo-Joseph & Daniel Joseph • Chris Jahnke • Sara James • Liz Jansen • Cindy Jarvi • Daniel Jennrich • Amy Jensen • Clifford L. Jensen • Robert Jensen • Jeff Jensen • Kelley Jewett • Joyce Johansson • Mike Johanson • Muriel Johanson • Jodie Johns • Julie Johnson • Kathy Johnson • Spencer Johnson • Laura Johnson • Duane & Ruth Johnson • Pamela Johnson • Sheldon P. Johnson • Megan Johnson • Ardes Johnson • Ann-Marie Johnson • Sandra B. Johnson • Rebecca Johnson • Thomas G. Johnson & Wanda R. Copeland • Al Johnston • Alice Johnston • Jane M. Johnston • Michael Jonak • Douglas Jones • Gary Jones • Pat Jones • Daniel Jones • Laurie Jones • Joan Joos • Timothy Joos • James Jordan • Gayle Jorgens & Stanley Wai • E. Michael Joseph • Stephen Jung • Paul J. Jungquist • Clement & Mary Kachelmyer • Evelyn Kadmas • Mark Kaiser • G.L. Kaiser • Margaret Kallal • Bruce & Barb Kalland • David Kamminga • Matt Kane • Greg Kankovsky • Joseph Kankovsky • Patricia Kankovsky • Shirley & Arnold Kaplan • Anne Kapuscinski • Nick Karls • Byron Karnes • Vasili Kasatkin • Susan Katz • Sandy Kaul • Willard & Mildred Kehrberg • Mary Kelley • Jeannine Kellogg • Jennifer & Bill Kellogg • Carol R. Kelly • Keith Kemnitz • Michelle Kemper • Lucy Kennedy • Rich Keppers • Don Kern • Steve Kerr • Bruce S. Kessler • Karin Kettering • Carol Keyes-Ferrer • Carol Khayatt • Janna Kieffer • Tomas & Anna Kieselbach • Susan Kilby • Douglas Kimble • Barbara A. Kimble • Dan King • Jeanne T. King • Norma Kingsberg • Barb Kirkpatrick • Jill Kirschner • Judy Kittock • Val Kjellberg • Helen Klaers • Kris Kleiber • Allen W. Klein • Wade Klema • Todd Klukow • Rita Klumper • Dave Klun • Rebecca & Michael Kneer • Chuck Knudsen • Nicole Knudtson • Linda Knutson • Jerry & Kathy Kockler • Rebecca Kockler & Jesse Stewart • Eleanor Koepf • Sally Kohlstedt • Donald Kolhoff • Patricia L. Koors • Nancy Koursh • Linda Krach and Robert Kriel • John Kraft • Lynn R. Krafve • Ansel Krannich • Mike Krantz • Spruce Krause • Michael Krech • Kim Krier • Kathryn Kriha • Jim Krohn • Missy Krouth • Michael Krueger • E. Kubera • Kathryn Kufus • Jill & Joe Kugler • Marie Kulick • Mark Laakso • Mary Ann Laber • Connye LaCombe • Darren Laesch • Donna I. Lamb • Richard C. La Motte • Karen Land • Cynthia Landis • Marjorie Lane • Mark Lapham • Cal Larson • Roger C. Larson • Judith LaValle • Mary Lawson • Al Layman • Harriet & Geroge Lazaroff • Laura LeBarron • Mark LeDuc • Valerie Lee • Jill & Dann Lee • Kristi M. Lee • Steve Lee • Eugene & Irene Leibel • Karen Rittle Leigh • Kelly Kathleen Len • Mary C. Leone • Steve Lepinski • Jack Leppla • Edward & Annette Lewanski • Mr. Floyd Lewellan • Charlotte Lewis • Liz Libersky • Liz Liddiard • Jeanette Lien • Mary Liepold • Harriet C. Lievan • Craig & Elizabeth Lindeke • Eric & Julie Lindmark • Matt Lindquist • Robert Lindquist • Brent Lindstrom • Michelle Linhoff • Grant Loehning • Lorna Loss • Frani Lowe • Karen Lucas • Mike & Laura Ludwig • Eric Ludwig • Ann Luithly • Barbara Lukermann • Mark Lund • William Lund • Mary Lundberg • Mara Lunden • Nancy Lundquist • Tim Lundquist • Warren Lee Lindquist • Ann Lindstrom • David Loosbrock • Mark Ludwig • Gretchen Lund • Cynthia Lybhest • Kevin Lynch • Mary Kay Lynch • James Lynskey & Jane Dietl • John C. Lynskey • Brenda Lyseng • Scott Lysne • Roderick MacDonald • Carol Madden • William Mahlum • Jan Mahoney • Kevin Mahony & Wendy Fassett • Tony & Alice Maistrovich • Ruth Maley • Tom & Sandra Mallon • Rich Malloy • Robert Manders • Mark Manthey • Nina Manzi • Thomas J. Marcella • Anne Markfort • Robin Markowitz • Jean Marquardt • Marion Marshall • Jim & Mary Lee Marshall • Mr. and Mrs. David L. Martens • Geoff Martin • Marilyn Martin • Nikki Martin • Janet E. Martins • Samantha A. Marty • Marilyn F. Mason • Bonnie Matter • Mary Ann Mattox • Phyllis Matz • Kathy Mayerhofer • Sylvia McAlpine • Ryan McCabe • Robert McCabe • Elizabeth McCambridge • Georgann McClure • Mr. & Mrs. Robert C. McClure • Don McClure • Sylvia McCollor • Ruth McCoy • Brian McDaniel • Nila McDonald • Maridee McEvoy • Patrick McGrane • Dan & Nancy McGuinness • Erik McInroy • Jean McIntosh • John L. McKenzie • E. Anne McKinsey • Malcolm & Wendy McLean • Heather McMaster • Patricia McNabb • Larry & Rita McNamara • Tom & Phyllis McNamee • Denise McNeal • Lori McPherson • James A. McRae • B. McReavy • Pamela Meade • Debra Meath • Joan & Richard Meierotto • Ladonna Meinecke • Jeffrey Meinert • Carol Mellom • Shirley Melrose • Paul Melvin • Raymond & Barbara Mendenhall • Dan Menken • Doug Mensing • Gordon & Ruth Menten • Debra Merritt • Karen Mester • Dennis & Margaret Meyer • Douglas Meyer • Sara Meyer • Lillian N. Michael • Margaret A. Michaelson • Carrie Michaud • Sandra & Darrel Michels • Andrew Mickel • Janet Middendorf • Jill & Ernest Miel

• John & Linda Mielke • Gary Mierek • Connie Miller • Kenneth & Kathleen Miller • John Miller • Ted Miller • Sossia Miller • Susan Milnor • Lou Ann Milotzky • Paul Mitchell • Shirly Mitchell • Carol Mockovak • Jean Moede • Katie Moen • Anne Moening • Daniel Mohwinkel • Dr. Charles F. Moldow • Frank Molek • Mark & Robyn Moltzan • Ann Mongoven & Brad Karkkainen • David E. Monson • Gunilla Montgomery • Dean Montour • Shirley Kerr Moore • Tom, Marissa & Whitney Moore • Elaine Moore • Alan Moorman • Mary Moreira • Al Morelli • Margaret Morgan • Frederick & Elizabeth Morlock • Jo Ann Morse • Richard W. Mosiniak • James F. Mossman • Eleanor Mowery • William & Imelda Muggli • Mr. Larry J. Mulenburg • Hal & Luann Muller • John W. Mullin • Hugh Munns • Craig Muntifering • Joe Murnane • Bonnie Murphy • Camille Murphy • William Andrew Murphy • Sarah G. Murray • Rose Mutziger • Leonard Nadasy • Joshua Nardie • David Nass • Vicki Nehring • John C. Neimeyer, Jr. • Marvin Nelms • Ann E. Nelson • Barbara Nelson • Ben & Sheila Nelson • Bob & Eric Nelson • Chad Nelson • Chuck Nelson • Clair D. Nelson • Conrad N. Nelson • Denice Nelson • Dorothy Nelson • Ellen Nelson • Joe & Penny Nelson • Kathy Nelson • Mark Nelson • P. Nelson • Rich & Judy Nelson • Nathan Nesje • Cari Ness • Ashleigh R. Newman • Raymond Newman • Connie Nguyen • Eileen Nichols • Lonnie Nichols • Lynette Nickleson • Cheryl & Thomas Niebeling • Mr. Raymond L. Nilsson • Sally L. Noll • Michael & Christine Nord • Kathryn Norman • Lucille K. Norman • Michael Norton • Katharine Norton • Nina Norum • Charles T. Norwood, Jr. • Lisa Nowak • Carol Nulsen • Josephine D. Nunn • Teresa & William Nye • Betty Nystrom & Bruce Mancini • Sharon Obeiragner • Mary Kathryn O'Brien • Michael & Connie O'Brien • Patricia O'Connor • Cathy O'Dell • Chris O'Donnell • Megan Ogdahl • Jeanne O'Gorman • Maureen O'Hehir • Brad Olson • Daniel Olson • David Olson • Dick & Jo Olson • Grace Olson • Janet Olson • Mary B. Olson • Matt Olson • Patricia Olson • Robert Olson • Kelly O'Neill • Corrie Ooms Beck • Herb & Donna Opp • Hillary Oppmann & Andy Holdsworth • Alice M. Orosz • Linda Orwoll • Larry Osborne • Mark Osborne • Mark Ostlund • David Ott • Jim Ouray & Karn Anderson • Douglas Owens-Pike • Elizabeth Ozmon • Kathy Palmer • Joan Palmquist • Jessica Paquin • Gary Parker • Georgette & Steve Parker • Paul (Bill) Parker • Virginia Parks • Michael Parrish • Dean Pass • Mr. & Mrs. Eric Pasternack • Ruth Patton • Margaret Paul • Michael Paul • Edlyn & Ray Paulson • Dr. John C. Paulson • Kelly Paulson • Mabel Pearson • Judy Pederson • Allen Peek • Miki Peine • Gary Pelton • Jackie & Dean Pelton • Cathryn M. Pernu • Joe Perron • Anna Pesola • Anna Peterson • Camille B. Peterson • Diane Peterson • Ethel Peterson • Greg & Mary Peterson • Jennifer Peterson • Jill Peterson • Joel Peterson • Lisa Peterson • Mark Peterson • Merle Peterson • Pat Peterson • R. Peterson • Steve Peterson • Tracy Peterson • Patricia Pfalz • Anne Phares • W. Todd Pierson & Beth Schoeppler • Helen Pietrowski • Barbara Pilling • Tina Pint • Virgil & Deb Pint • Thomas & Lori Piper • Brandon Ploof • Jan Pohlen • Sally Polk • Steve Poncin • Clifton A. Pond • Sandra Potthoff • David Poupore • Robert W. Powell • Pat Pratt • Jon Pratt • Chad Pregracke • Megan Press • Laura Prill • John Probst • Susan Prospect • Rebecca Pryse • Lisa Pugh • Liz Puhl • Bryce Purdy • Ms. Anne Pusey • Rose Quaday • John T. Quafe & Judy M. Geck • Li Qin • John Quinn • Tom & Nancy Quinell • Sara & Timothy Racine • Bonnie Rae • Archie W. Raines • Craig Ramsey • Chuck & Elaine Rasch • Patricia Raub • Rickey P. Ravnholdt • Kathleen Reagen • Molly Redmond • John Rees • Hilary Reeves • Louise I. Reid • Susan Reinhart • Donovan Reinke • James D. Reinke • Joseph G. Reischel • Suzanne Reischl • Kimm Reithmeyer • Timothy Remus • John Renaud • Carolyn Renstrom • Erik Reseland • Karen Rettew • Margaret Reynolds • Emily & Rene Reynosa Juarez • Richard & Holly Rhodes • Timothy Rice • Terry R. Richmond • John C. Riebel, Sr. • Michael Rigney, Jr. • Alice Rivard • Martha Rixmann • Matt Rizzo • Harold A. Roberts • David Roberts • Alice & Byron Robinson • Julie Rochat • Angela Rodriguez • Susan Roe • Dennis Rogers • Michael & Cecilia Rohrer • Rafael Rola • Wendy Rolek • Jessica Roll • Gina Rollins • Bonnie Ronning • Karen Rosar • Mary Rosendahl • Howard & Dorothy Rosenwinkel • Karen Ross • Gabriel Ross • Marvin Rothfusz • Lyle & Virginia Rowe • Dianne, Nick & Linnea Rowse • Betty & Alfred Roy • Kathryn Rubin • Lisa Ruetten • Steve Rummler • Adah Ruona • Jennifer Rutledge • Chris Ryan • Patricia Ryan • Tim Ryan • Mary Sabatke • Robin Sahr • Christine D. Sailer • Kelly Salseg • Diane Sanders • Pamela Sanders • Harvey & Janis Sarles • Kate Sartoris • Bonnie Saumweber • David Saumweber • Judith Saumweber • Sharon Sawyer • Paul & Trudi Schaefer • Katherine Schafer • Andrew Schendel • Dave Schendel • Mary Schertler • Harold Schilling • James Schlagel • Clarissa Schlieff • Paul Schmitt • Jennifer A. Schmitz • Tim Schnabel • Roy Schneider • Lola Schoenrich • John Schommer • Renee Schommer • David Schreiber • Martin Schub • Clara Schultz • Clement Schultz • Dotty Schultz • Kristin Schultz • Marcia Schultz • Annette L. Scott • Penelope Scott • Rachel Scott-Hovland • Rebecca Lynn Sechrist • Mae Seely Sylvester • Gary & Kathleen Seibert • Gary Seim & Lee Pfannmuller • Jeanne Selix • Gloria J. Sell • Julian & Barbara Sellers • Thomas Selwold • Jim Semanko • David & Patricia Senogles • Deb Seppelt • Toni Seroshek & Gail Anderson • Debbie Sershon • Peter & Lynne Sethre • Tom Shaw • Kassie & Larry Shearon • Robert Sheffield • Andrew Shepard • Patricia Sherman-Cisler • Flora Shinkle • Charles Shreffler • Margaret Shreffler • Andrea Shuck • Steve & Vale Shuster • Harry A. Sieben, Jr. • Bob Siegel • Harald Simonsen • Kari Simonson • Ann Sinkula • Sue Sjoselius • Linda Skallman • Harry & Mary Skinner • Pamela Skinner • Wioletta Skotnicka-Kowalec & Piotr Kowalec • Cynthia Slack • John Slater • Terry Slininger • Carolyn Smith • Howard & Merna Smith • James & Suzanne Smith • Mary & Doug Smith • Scott Smith • Scott Smith & Scott Homler • Stacey Smith • Stephanie Smith • William D. Smith • Jason & Kimberly Smythe • Robert Sniegowski • James E. Snoxell • Helen G. Snustad • Clark Snyder • Paul Snyder & Robert Payne • Ron Sonmore • Christine Souther • Laurie Sovell • Elsie Spillman • Christopher Splees • Tammy Splees • Stan Sroga • Lisa Stachovich • Michelle Stack • Ken Stankus • Conan & Monica Stanton • Joseph Steger • Terry Stellick • Kerwin Stenzel • Jacqueline C. Sterling • Andrea Stern • Lance & Dana Stevens • Ruth Stewart • Chris & Karen Stoddard • Charles & Deedee Stoddard • Scott Stone • Jason Stone • Jeff Stone • Chad Stone • David & Sally Stoppel • Elizabeth Storey • Larry Storey • Joan Storlie • Warren Stortroen • Thomas & Gail Stout • Sarah Stratton • Harry Straub • Dr. Richard Streu • Gary Stromley • Ruth Stryker-Gordon • Arvind Subramanian • Mark Suentjens • Mary Sullivan • Patrick Sullivan • LeRoy Sundquist • Marcia and Bert Sundquist • Marilyn Sundquist • Mark Sundquist • Nick Sundquist • Rachel Lynne Surber • Ross Sutter & Mary Lofgren • Eleanor Swanson • Steve and Judy Swanson • Eileen Swanson • Lois & Roy Swanson • Paul Swanstrom • Timothy & Beth Swedberg • Kerry Sweeney • Joyce Swenson • Pamela Syverson • Tammy Syverson • Apple Szostak • Rhett Taber • Brook & Peter Tabor • Paul Taft • Tom Tan • Adam Tangen • Charles & Janet Tarino • Darcy & Andy Tatham • Leanne Taveggia • Harold Tearse, Jr. • Theresa Joan Teel • Michael Tegeder • Ros Telisek • Denise Tennen • Mr. & Mrs. W.R. Terrell • Debbie Theimer • Michael Therriault • Tine Thevenin • Loretta Thielen • Corenne Thomas • Andy Thompson • Bradley Thorson • T.P. Timmer • Kyle & Deborah Tobias • Nancy Tomanek • Alan Torborg • Chad Towle • DeWayne Townsend • Vincent Tracy • Robert Trebing • Lynne Trench • Judith Mary Trepka • Julie Trimpe • Dick & Pat Trotter • Muffet Trout • Solveig Tschann • Jeannette Tschida • Barbara Tudisco • Beverly Turk • Dan Turner • Janice Ullrich • Michelle Ungs • Beth Upton • Carol Urness • Karen Utter & Steven Woletz • Michael Utz • Allan Valgema • Tina Van Hecke • Paul Van Keulen • Doug & Tracy Vandegrift • William Vanderwall • Roy Vanderwerf • Shelley Vansice • Jill Vecoli • Albert Veeder • John W. Vegter • Arlene Veith • Jean Velleu & Jim Law • Courtney Veneklasen • Judith A. Vermeland-Wendt • Lyn Verthein • Harold Vestermark • Mary Ellen Vetter • Philip & Mariette Vieth • John Vilandre • Joyce Vincent • Steven Vincent & Jill Weese • Liesel Virchow • Lowell Vogen • Greta Vora • Shannon Voto • James Wade • Barb Wagner • Regina Wagner • Steve Wahls • Sara & Jess Walczak • John Waldo • Michael Walker • Kelley Walker • Lori Wallace • Julia Wallace • Donald Wallgren • Greg Wallin • Alisin Walsh • Kerry Walsh • Mark Ward & Catharine B. Clapp • Venita Warnke • W. Warren • Monica Washington • Janet Watchman & Joel Weisberg • Michael Watry • Eric Watschke • Robert Watts • Erika & Bill Way • Walter P. Weaver • Lawrence & Dee Weaver • Gordon Weber • David Wee • Elizabeth Weis • Sara Weiss • Karen Weium • Lark Weller • Debra Wells • Kelly Wells • Mike Wendinger • Kristi Wenzel • Karen Westberg • Richard Westby • Julie Westerlund • Keith Westrum • Ken & Fran Westrum • John & Judy Westrum • Laura Westrum • Russ Weybright • Barbara Whalen • Sherri Whalen • John & Kelly Wheaton • Kathryn Whichard • Deb & Wayne Whidden • Dr. & Mrs. Carl White • Jean White • Bethany Whitehead • Debbie Wicklund • Sue Wilber • Betty & Mary Jane Wilcox • Carol Wilcox • Leslie Wilcox • Joe Wild Crea • Arwen P. Wilder • Tom & Denise Wilkens • Kathleen & Mark Willemsen • Michelle Williams • Clay & Karen Williams • Jan Williams • Terrence Williams & Patricia Hampl • Jeffrey Willius • Buzz Wilson • Chester Wilson & Suzanne Donsky • Helen C. Wilson • JoAnne Wilson • Kendra Wilson Beaubien • Mary Wilson • Randall Wilson • Bill Wingerd • James Wink • John & Judith Winslow • Darby & David Winters • William F. Wittenberg • Jodie Woelffer • Mark Wohlers • Bisrat Woldegiorges • Mary Jo Wolf • Barbara Wonsen-Liukkonen • Mildred Wood • Paul Wood • Robert Woodburn • John Woodward • Paul & Megan Wright • Erik Wyckoff • Carol Yanisch • Jesse Yant • Bruce Yoder • Billie Young • Howard Young • Joyce M. Young • Steven Young • Lorene & Robert Youngquist • Carol Zajicek • Mary Zaloker • Kristi Zanett • Velta Zeltins • Helen Jean Zera • Kirsten Zerhusen • Linda Zick • Mary Zorn • Red Dot Trading Co.

Staff



Back row: Tom Lewanski, Karen Schik, Elizabeth Storey, Katie Galloway, Heather Haynes, Irene Jones, Whitney Clark, Gabe Ormsby | Kneeling: Daniel Huff, Claire Stokes, Connie Lanphear | Not pictured: Kay Yanisch | New staff in 2006: Trevor Russell, Michelle Garvey, Kris Robison | Interns: Devin McLennon, Faraeh Awale

Board of Directors

John Anfinson
Candace Campbell
Stewart Crosby
George Dunn
Forrest Flint
Peter Gove
Chris Higgins
Kate Jaycox
Perry McGowan
Hokan Miller
Ted Mondale
Lynn Moratzka (2006 Chair)
Ron Nargang (retired in 2005)
Ed Oliver
Michael Osterholm
Phil Riveness (2005 Chair)
John Linc Stine (Joined in 2006)
Terra Thompson
Deanna Wiener



An increasing number of our friends connect with us through our presence on the web.

In 2005, we launched our web-based field guide (www.fmr.org/fieldguide/), a fascinating resource about points of interest along the river in the metro corridor. The guide is searchable by a variety of criteria and includes detailed information and photos of many river sites. We look forward to making it more interactive in the coming year.

Those who are paddlers or pledgers of the Mississippi River Challenge will find a number of enhancements to our event site, www.mississippiriverchallenge.org (pictured). While the event site should be your first stop for news and information about this exciting event, we have also partnered with FirstGiving.com to provide easy-to-use tools for paddlers and their supporters to share their enthusiasm for the event and track progress toward their fundraising goals. Sign up to paddle today and create your own personal paddler page!

When we first launched our organizational web site, www.fmr.org, we were a much smaller organization. As FMR continues to grow and expand our efforts on behalf of the Mississippi River and its watershed in the Twin Cities, our web site will continue to grow with new information and tools to help everyone play a part in river protection. Look for host of new features and a new design at www.fmr.org in the coming year!



Friends of the Mississippi River
360 North Robert Street
Suite 400
Saint Paul, MN 55101
651.222.2193
www.fmr.org

NON-PROFIT ORG.
U.S. POSTAGE
PAID
SAINT PAUL, MN
PERMIT NO 1581