

N Dowling Avenue Walk Feedback – September 12, 2017

HANDOUT QUESTIONS

1. What makes you know this is your route to the river?
 - Don't feel safe
 - Sidewalks in disrepair
 - Sell houses south side of Dowling?
 - Widen bridge to build pedestrian bridge at Perkins Park
 - Railing and lights on current bridge
 - Signed crosswalks
 - I use it all the time
 - Nothing currently
 - Signage
 - Arch over entry at Dowling and Washington that is sculptural and made of metal/stone – nod to both the river and the industrial parts of the park
 - This is not my route to the river, I'm in Logan Park.
 - There seemed to be accessibility issues [for people who are] blind/low vision and [those with] mobility [challenges]
 - I live close to Dowling and use it to get to the bike path that goes along the river.
 - Nothing. Potential for improvements is there.
 - I don't know this is my route
 - There is too much traffic to get to the river now.
 - Widening sidewalk
 - Better lighting
 - Way signage
 - Gateway design to welcome people similar to the stone pillars off of the 35W/46th St exit with the City of Minneapolis and name of neighborhood

2. What changes would you like to see along the walk?
 - Quiet pathway (buffer)
 - National Park signage (welcoming)
 - Sculptures?
 - Is railroad active?
 - Overhead power line stays
 - Warehouse stays?
 - Pollution?
 - Parkway trails to connect
 - Make a ped/bike trail away from traffic
 - Dedicated pedestrian/bike path that would push walkers and bikers to "pass over" on/off ramps, freeway and Washington directly to park entrance
 - Less industrial, more aesthetic
 - Bike lane posts for sure and better lighting
 - Pedestrian lighting
 - Truck route redirected
 - Train route redirected

- Crosswalk improvement
- Safety measures implemented
- Better crosswalks
- Clearly marked
- Lighting
- Better pedestrian lighting
- Gateways into both the park and neighboring community
- Way signage
- Incorporate theme/design of park into the surrounding community i.e. decorative light poles
- Protected bike path/lanes, perhaps something similar to 26th Ave

3. What would bring you to the riverfront?

- Community gathering spaces
- Amphitheater
- Millennium Park – multi-use
- Kitchens for food trucks
- Health concerns?
- Humps
- I go now
- Walk/bike path from Webber Park to new park
- Sculpture garden (e.g. Millennium Park, Chicago)
- Seating
- Picnic
- Amphitheater
- Restaurant
- Outdoor café
- Coffee shop
- Boardwalk promenade kind of thing
- Low density housing/retail/LT commercial
- I would love a grove or blossoming trees to hang out under.
- Would love to be able to rent a hammock
- Biking
- Walking
- Concerts
- Coffee house
- Restaurants with outdoor seating
- Floating islands in river to promote wildlife and aesthetic appeal
- Powerlines removed and placed underground
- Infrastructure rebuild
- Retail shopping outlet (i.e. The Walk Jumeirah Beach Residence, Dubai, UAE as reference)
- Parking
- Green spaces
- Restaurants
- Brew pubs
- Better path connecting with current paths

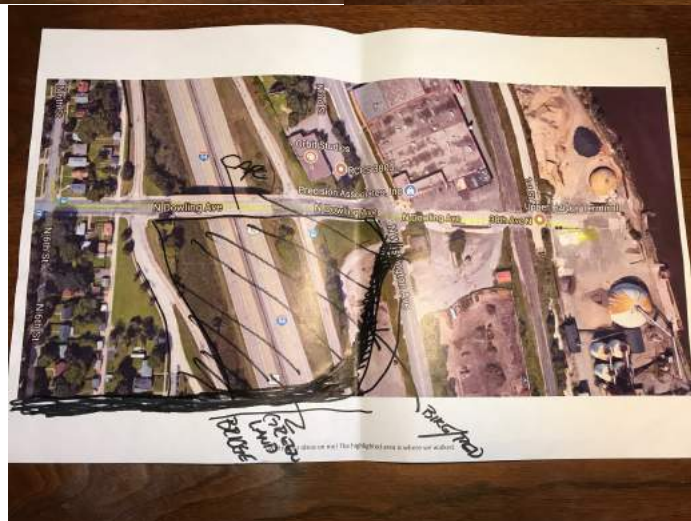
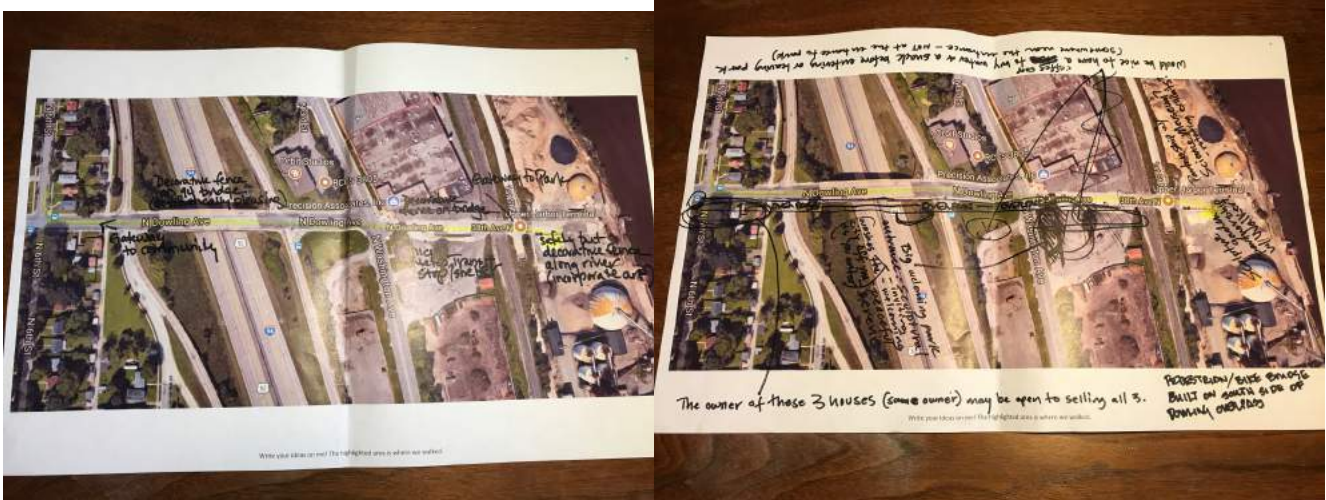
- Bike and walk trails
- Amphitheater
- Water activities – standup paddleboard, kayaking
- Sculpture garden
- Domes covered in greenery
- Safe access
- Gradual relaxation as you walk [the route to the river becomes increasingly green and parklike]
- Partner with the Walker
- Something like the Native American domes in the Pacific NW

4. What would make it feel like the riverfront is part of your neighborhood?

- Access
- A safe way/fun way to get there by bike
- ACCESS
- Signage and directions from 49th, Webber Park, 42nd Bridge, 40th St
- Access
- Easy accessibility, safety
- Make Dowling a welcoming corridor to the river with beautiful “River Art” – maybe with “Upper Harbor Terminal” flags on the lampposts that are aesthetically pleasing
- Completely updated and renovated infrastructure with movement facilities and green/forward thinking amenities
- A beautiful entry – “Port of the Mississippi”
- Trees
- Connecting walk/bike paths from Broadway/Lowry Bridges
- Loved the graffiti

COMMENTS FROM THE MAPS

- [Three homes south of and adjacent to Dowling west of I-94 western on/off ramps] The owner of these three houses (same owner) may be open to selling all 3.
- [Dowling west of western on/off ramps] Gateway to community
- [94 Bridge] Decorative fence on 94 bridge (aesthetically pleasing)
- [New bridge - 37th Avenue N & 6th St N to Dowling & Washington] A new, green, curving bike/ped land bridge. Cars on Dowling.
- [New bridge - 6th St to Washington Avenue just south of Dowling] A new overpass. Ped/bike bridge built on south side of Dowling overpass
- [N Washington & Dowling] Nicer Metro Transit stop/shelter
- [SE corner of Washington and Dowling] Big welcoming park entrance. Sculptural. Inviting. Welcoming. Peaceful. Serene. Washes the city off as you enter.
- [South of Dowling and adjacent to Washington on the east or west side] Would be nice to have a coffee shop to buy water and a snack before entering or leaving park (somewhere near the entrance – NOT at the entrance to the park)
- [Dowling & 1st] Gateway to Park
- [UHT site] Safely put decorative fence along river (incorporate art)
- [UHT site] Sculpture garden, partnership with Walker?
- [UHT site] Partnership with Science Museum? Rotating exhibits?



NOTES FROM THE WALK

Group 1 – Alicia (4 adults 20-65 years old / 3 White, 1 Asian / 3 women, 1 man / 3 Northside, 1 NE resident)

Overall

- Emergency poles/kiosks along route
- Major wayfinding
- Dowling is scary [traffic related comment]
- Not keen on bike lane
- We go to 26th to cross 94, it's quieter
- Need at least 3 new connections in this area
- A land bridge covering I-94 between Lowry and Dowling
- This path is the shittiest part of my experience in North Minneapolis.

Stop 1 – 6th & Dowling

- Too busy
- Traffic backed up

Stop 2, 3 & 5 – Interstate 94 on/off ramps

- Popular highway entrances and exits
- Missing crosswalk button
- Make the intersection be 'no right turn on red'
- Poor sightlines
- Remove tower
- "The death zone"
- There are no audio alerts for sight impaired at any of the crosswalks
- There is a lack of crosswalks and we wouldn't use them

Stop 4 – Middle of the bridge

- Sidewalk is too narrow
- Would like art fencing here
- Would like this area to resemble a park, be natural
- Have there be a greenway to the park like the Northside Greenway
- Concrete barrier and trees between cars and people
- The chain-link fence feels prison like, reminiscent of inner city
- Create a new ped bridge from the highest point on Dowling down to the UHT

Stop 6 – Washington Avenue & Dowling

- Straighten road
- Possibly give DAI more space
- Wider sidewalk to encourage drivers to be more careful like Broadway and 26th
- Have a boat launch directional sign
-

Stop 7 – Railroad Tracks

- Keep bike traffic 1 block away – Dowling is too scary with the traffic

- Have a downtown river shuttle
- Ped bridge over the RR tracks
- Lighting, don't see any
- Sidewalks and curb cuts
- Artistic fencing along river

UHT Site

- Parking
- Access for food trucks
- Cherry trees blooming
- Space for hammocks
- Water access
- Boat launch
- Make site accessible by transit

Group 3 – Whitney (6 adults 40-65 years old / 1 Black, 5 White / 4 women, 2 men / 5 Northside, 1 Southside resident)

Overall

- Need transit connections
- Need additional ped bridge between Lower and Dowling

Stop 1 – 6th & Dowling

- Kiosk to welcome people to neighborhood like at 46th and 35W

Stop 2, 3 & 5 – Interstate 94 on/off ramps

- Decorative lighting
- Very noisy
- Bike signals
- Separated bike lanes on each side

Stop 4 – Middle of Bridge

- Noisy
- Could be windy in the winter
- Like the vines on the fence
- Consider enclosed walkway
- Better ped lighting on bridge
- Water fountains
- Consider benches/furniture for bridge
- Chain link fence should go

Stop 6 – Washington & Dowling

- Welcoming gateway or arch entry here

Stop 7 – Railroad Tracks

- Want to be able to see the river
- Add a ped bridge

- Need sidewalks
- Wayfinding
- River shuttle

UHT Site

- Want to be able to use and access the water
- Boat launch
- Lighting
- Emergency buttons

Group 2 & 4 – Daurius (6 adults, 25-65 years old / 5 White, 1 unknown / 2 women, 4 men / all Northside residents) & Kate (2 adults 25-50 years old, 2 high schoolers, 4 4-6 graders / 3 Black, 5 White / 5 female, 3 male / 8 Northsiders)

Overall

- Greenspace

Stop 1 – 6th & Dowling

- Stop signs
- People are driving in the bike lanes
- Barrier is needed
- Sidewalk broken and uninviting and broken
- Need garbage can here

Stop 2, 3, & 5 – 94 on/off ramps

- Highway ramps are dangerous
- I'd like a metal and rock sculpture
- Loud
- Scary
- Dark
- Need a sound absorbing wall with mural

Stop 4 – Middle of the bridge

- Large drop off to Dowling [high curb/sidewalk], needs a railing
- Lights white to blue on the bridge
- Wider sidewalk
- Narrow road
- Secure bike land
- Sculpture that is river related here
- Make the bridge be a destination
- Can't see the river
- Make it ped friendly

Stop 6 – Washington & Dowling

- Scary
- Disappointing
- Loud

- Lots of trucks
- Biking
- Intersecting
- Welcome to N with river there public art

Stop 7 – Railroad tracks

- Leave buildings but make bikeable
- No path
- Road all cracked
- Would like to see trees and flowers
- Not a dead end
- Have an arch

UHT Site

- Have things to climb

MAP OF THE WALK STOPS

Dowling Avenue path to the Upper Harbor Terminal & the Mississippi River

STOP 1

STOP 3

STOP 5

**STOP 7
Railroad Tracks**

STOP 2

STOP 4

STOP 6

What improvements have Northsiders suggested for our walking route already?

<ul style="list-style-type: none"> • Straight and continuing protected bike lanes • Clear and dedicated routes for bikes and pedestrians 	<ul style="list-style-type: none"> • Barriers for bikers • Safer sidewalks • Crosswalks • Pedestrian lighting 	<ul style="list-style-type: none"> • More lighting • Sound and wind break on the bridge • Nicer fencing on the bridge 	<ul style="list-style-type: none"> • Land bridge • Boating access • Less air pollution
--	---	--	---