

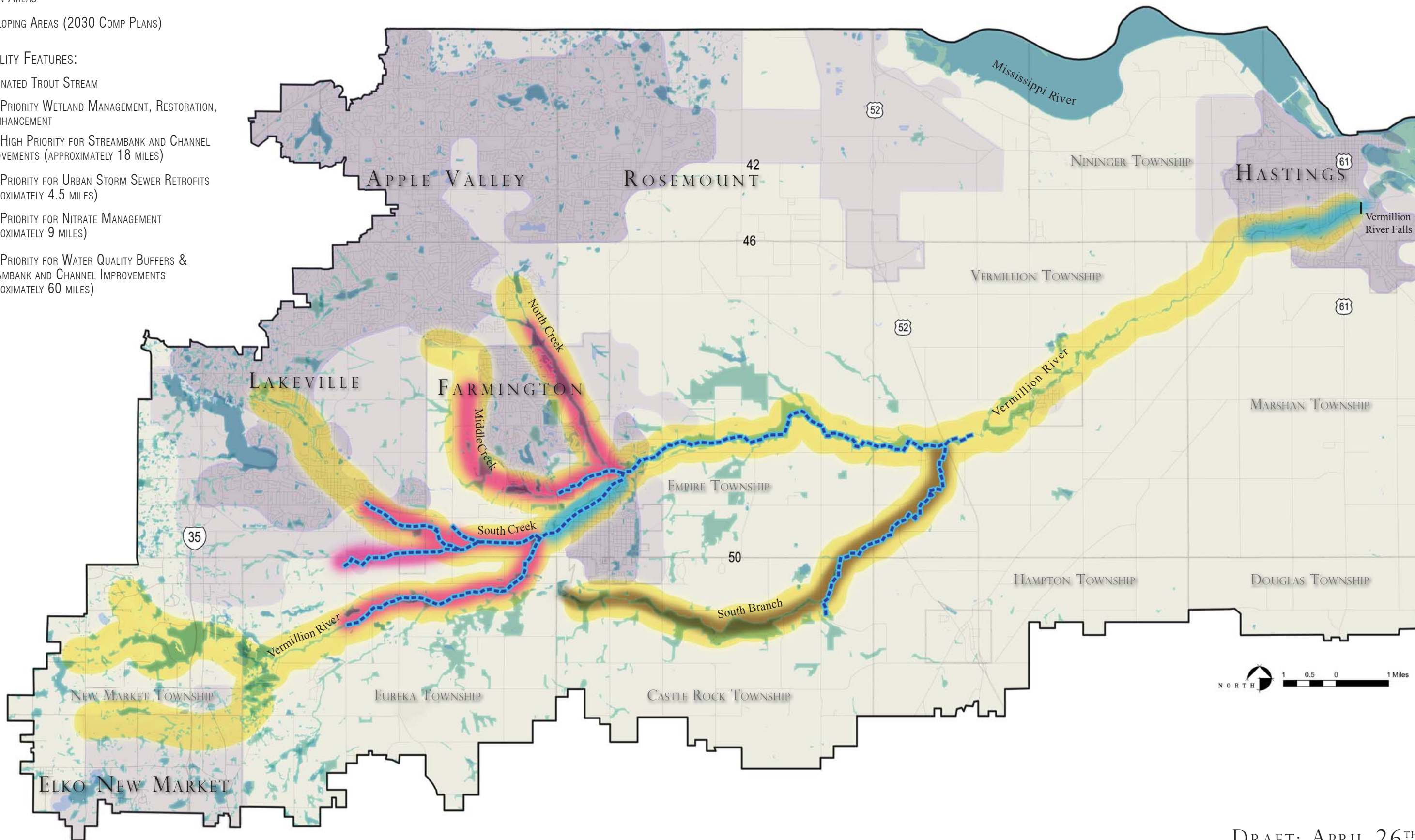
LEGEND:

MAP BACKGROUND:

- RURAL AREAS
- URBAN AREAS
- DEVELOPING AREAS (2030 COMP PLANS)

WATER QUALITY FEATURES:

- DESIGNATED TROUT STREAM
- HIGH PRIORITY WETLAND MANAGEMENT, RESTORATION, OR ENHANCEMENT
- VERY HIGH PRIORITY FOR STREAMBANK AND CHANNEL IMPROVEMENTS (APPROXIMATELY 18 MILES)
- HIGH PRIORITY FOR URBAN STORM SEWER RETROFITS (APPROXIMATELY 4.5 MILES)
- HIGH PRIORITY FOR NITRATE MANAGEMENT (APPROXIMATELY 9 MILES)
- HIGH PRIORITY FOR WATER QUALITY BUFFERS & STREAMBANK AND CHANNEL IMPROVEMENTS (APPROXIMATELY 60 MILES)



DRAFT: APRIL 26TH

VERMILLION RIVER CORRIDOR PLAN: PRIORITY WATER QUALITY IMPROVEMENT AREAS